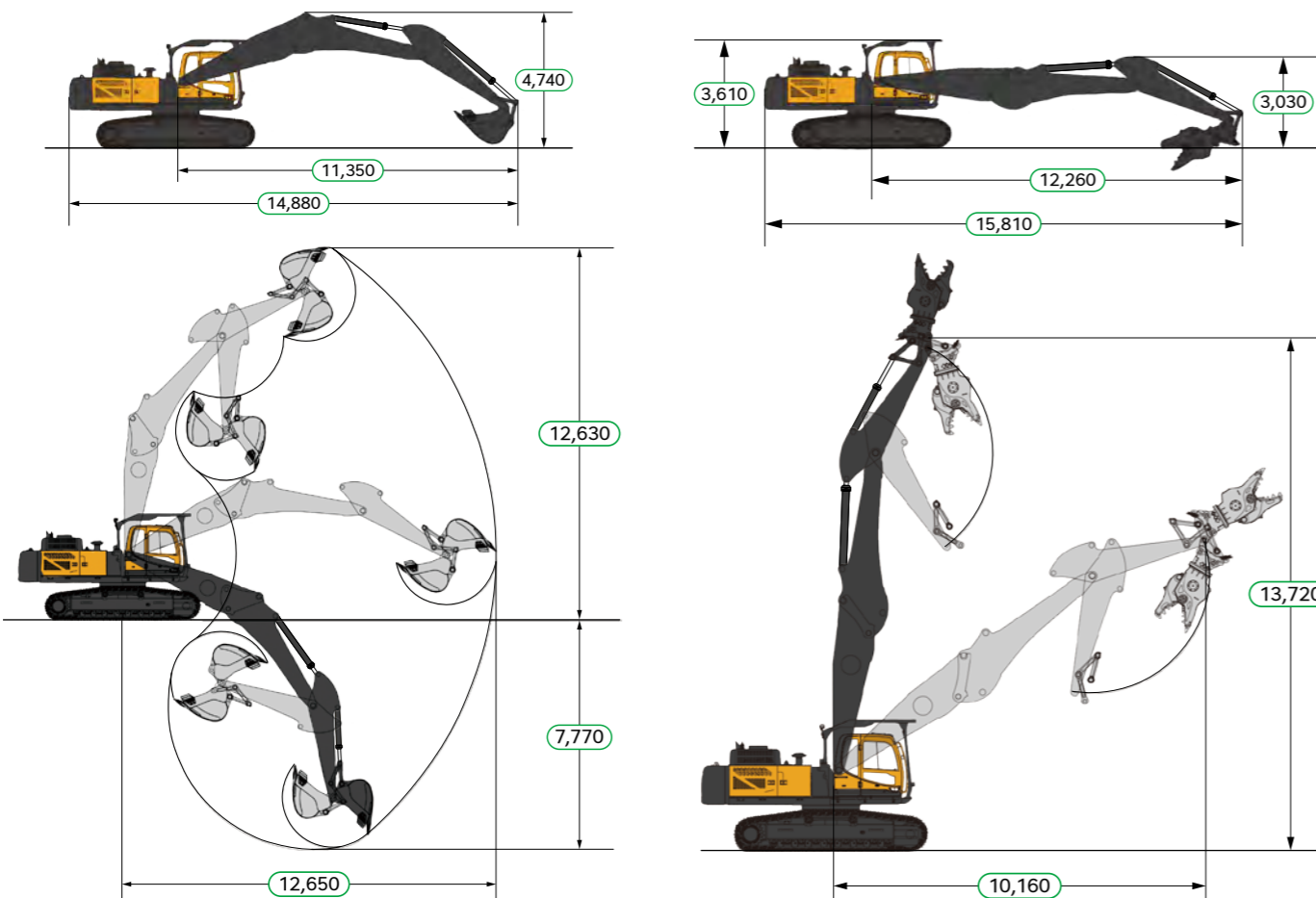


R380LC-9SDM  
SPECIFICATIONS(OPT)



Digging front (curved type)			
Main spec	Operating weight (approximate)	kg	46,940
	Ground pressure	kgf/cm <sup>2</sup>	0.84
	Overall length	mm	14,880
	Overall height	mm	4,740
	Max. Tool weight	kg	3,800
Front spec	Base boom + digging boom	mm	8,058
	Digging arm	mm	3,200
	Max. digging depth	mm	7,770
Work range	Max. digging height	mm	12,630
	Max. digging reach	mm	12,650

Digging front (straight type)			
Main spec	Operating weight (approximate)	kg	46,940
	Ground pressure	kgf/cm <sup>2</sup>	0.84
	Overall length	mm	15,810
	Overall height	mm	3,610
	Max. Tool weight	kg	3,800
Front spec	Base boom + digging boom	mm	8,700
	Digging arm	mm	3,200
	Max. digging height	mm	13,720
Work range	Max. digging reach	mm	10,160
	-	-	-

\* Further Demolition Attachment information : <https://www.hd-hyundaice.com/en/overview/attachment/contents>



Head Office(Sales Office)  
11F, GLOBAL R&D CENTER, 477 BUNDANG SUSEO-RO, BUNDANG-GU, SEONGNAM-SI, GYEONGGI-DO, 13553, KOREA

PLEASE CONTACT

2025. AUG

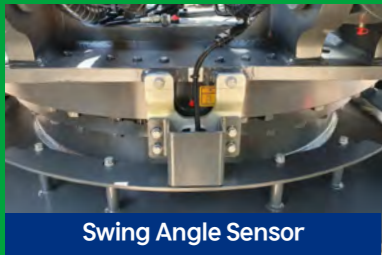
R380LC-9SDM

Hyundai Demolition Series



\* Photo may include optional equipment.

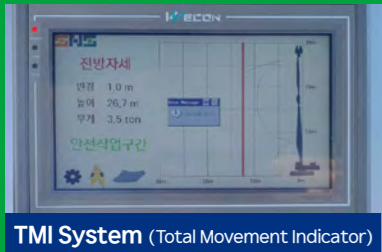




Swing Angle Sensor



Lowering Cab in Emergency



TMI System (Total Movement Indicator)



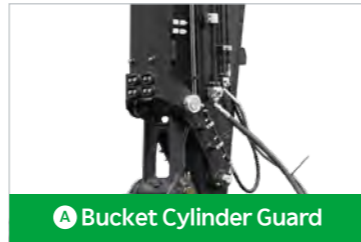
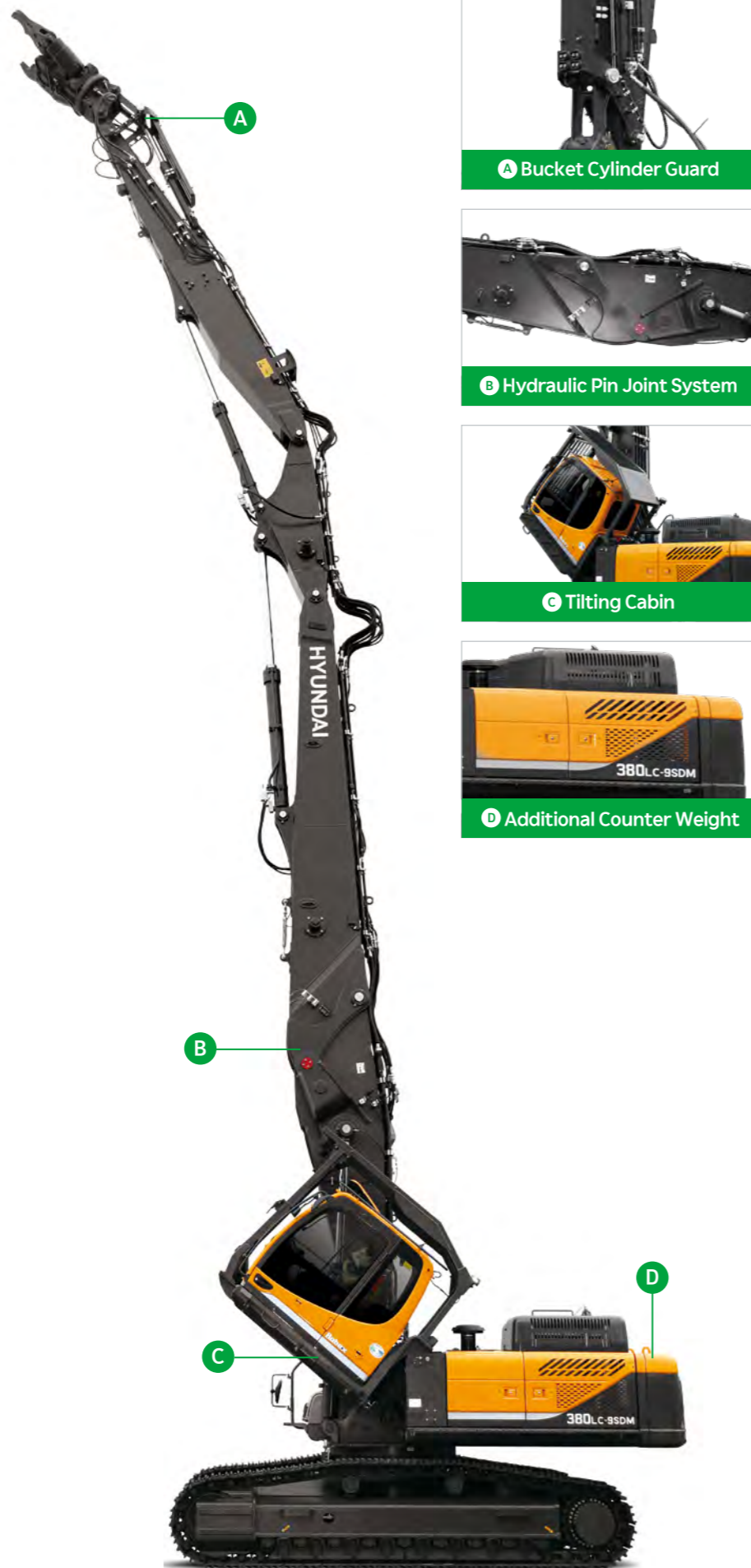
Beacon With Buzzer



CCTV on End-Arm



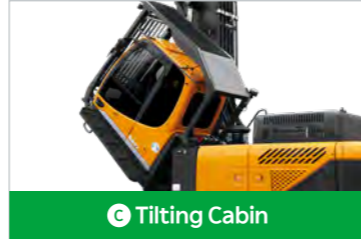
Warning Device Switch



A Bucket Cylinder Guard



B Hydraulic Pin Joint System

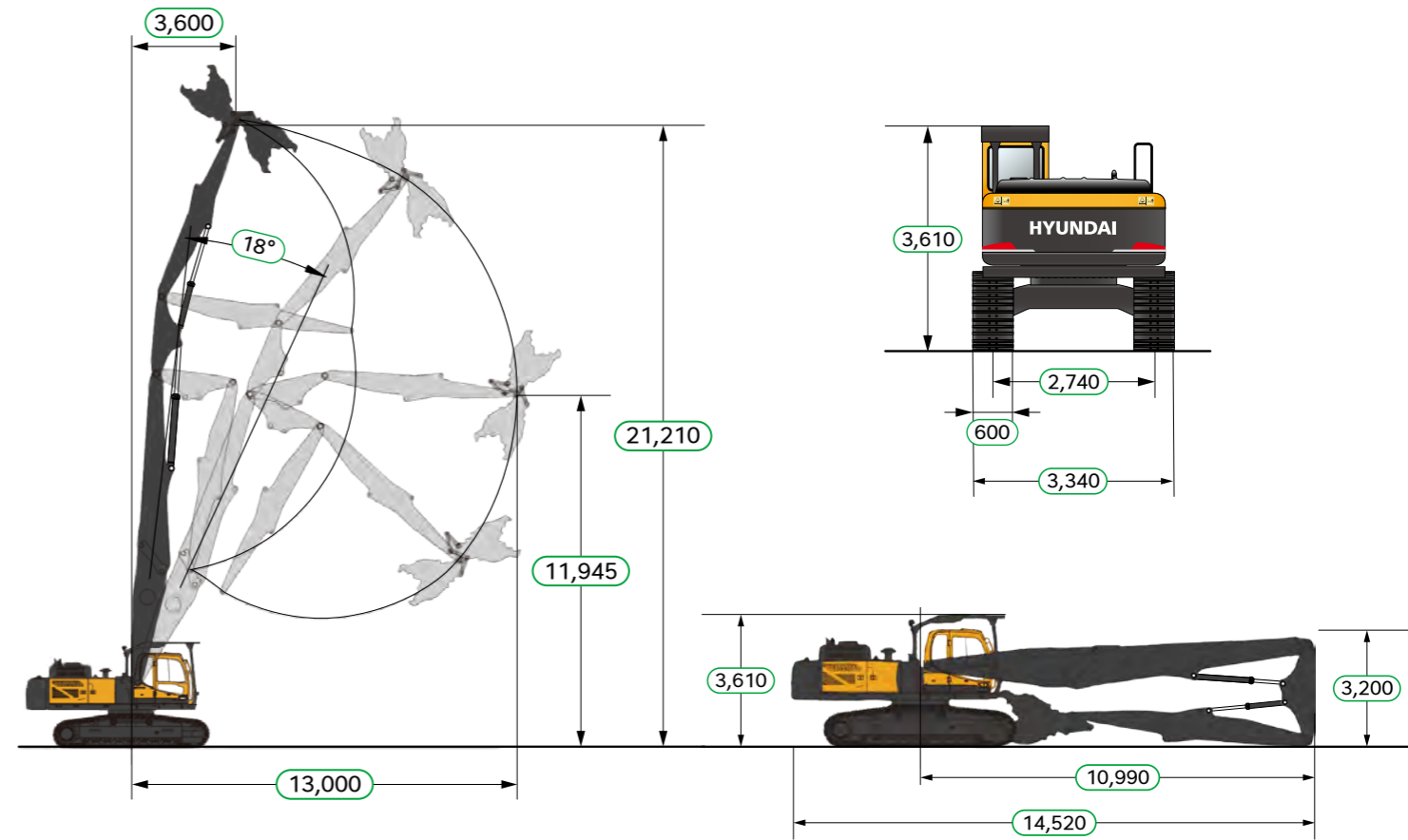


C Tilting Cabin



D Additional Counter Weight

## R380LC-9SDM SPECIFICATIONS(STD)



Machine specification				
Engine	Emission	-		Tier-2
	Model	-		HYUNDAI D6AC-C
	Rated flywheel horsepower	SAE	J1995(gross)	276 HP(206 kW) at 1,900 rpm
			J1349(net)	261 HP(195 kW) at 1,900 rpm
		DIN	6271/1(gross)	280 PS(206 kW) at 1,900 rpm
			6271/1(net)	265 PS (195 kW) at 1,900 rpm
	Max. torque	kgf · m/rpm		120 / 1,400
Hydraulic	Implement circuits / power boost	kgf/cm <sup>2</sup>		330 / 360
	Max. flow	lpm		280 x 2
Drive & Swing	Max. swing speed	rpm		10.0
	Max. travel speed	km/h		5.0
	Max. drawbar pull	ton		32.0
Tank	Fuel tank	liter		550
	Hydraulic tank	liter		210
Under carriage	Shoes width	mm		600
	Overall width	mm		3,340
	Counter weight(original+additional)	kg		10,100 (8,100+2,000)
Safety/ Performance	TMI system (total movement indicator)	-		Installed
	CCTV Camera on End-Arm	-		Installed
	Boom/arm/swing angle sensor	-		Installed
	Hydraulic pin joint system	-		Installed

High reach demolition front			
Category		Unit	R380LC-9SDM
Main spec	Operating weight (approximate)	kg	48,600
	Ground pressure	kgf/cm <sup>2</sup>	0.87
	Overall length	mm	14,520
	Overall height	mm	3,610
	Cabin tilting angle	degree	40
	Max. tool weight	kg	2,600
Front spec	Base boom + extension boom	mm	10,600
	Middle arm	mm	2,600
	End arm	mm	6,500
Work range	Max. boom angle	degree	18
	Max. pin height	mm	21,210
	Max. pin reach	mm	13,000