

# HL660 / 660L HL665 / 665L

With Tier 2 / Stage II Engine Installed

\* Photo may include optional equipment.



Head Office(Sales Office)  
11F, GLOBAL R&D CENTER, 477 BUNDANG SUSEO-RO, BUNDANG-GU, SEONGNAM-SI, GYEONGGI-DO, 13553, KOREA

PLEASE CONTACT

2025. JUN

Gross Power  
162 kW at 2,000 rpm

Net Power  
146 kW at 2,000 rpm

Operating Weight  
16,800 (17,330) / 17,300 (18,000) kg



# Hyundai HL660/660L, HL665/665L Wheel Loader Open Up the Future

Hyundai Construction Equipment strives to build state-of-the-art earthmoving equipment to give every operator maximum performance, more precision, versatile machine preferences. Open up the future with Hyundai!



BOOM/ATTACHMENT OPTION		
Model	Standard Bucket Capacity	Optional
HL660 HL665	3.0 m <sup>3</sup>	High Dump (Long Boom)
		Enlarged Bucket (4.5 m <sup>3</sup> )
HL660L HL665L	3.0 m <sup>3</sup>	Coal Bucket (3.5 m <sup>3</sup> )
		Rock Bucket (2.3 m <sup>3</sup> )
		Side Dump
		Log Grapple

BOOM/ATTACHMENT OPTION		
Model	Standard Bucket Capacity	Optional
HL660L HL665L	3.0 m <sup>3</sup>	High Dump (Long Boom)
		Enlarged Bucket (4.5 m <sup>3</sup> )
HL660L HL665L	3.0 m <sup>3</sup>	Coal Bucket (3.5 m <sup>3</sup> )
		Rock Bucket (2.7m <sup>3</sup> , 2.3 m <sup>3</sup> )
		Side Dump
		Log Grapple

\*Photo may include optional equipment.



Max. Speed  
**36.0** km/h



Operating Weight  
**17,300** kg



Bucket Capacity  
**3.0** m<sup>3</sup>



Power (Gross)  
**162/2,000** kW/rpm



\*Photo may include optional equipment.

## HIGH EFFICIENCY MACHINE

Innovative technologies make the HL600 Series wheel loader fast, smooth and easy to control. HL600 Series wheel loaders are designed for maximum performance to keep the operator working productively.

### Powerful, Fuel Efficient and Energy-Saving Engine

Weichai turbocharged engine are built for maximum power, reliability. This engine meets the emission standards EPA Tier II, EU Stage II. Weichai WD10 engine has maximum power of 162 kW and peak torque of 980 N·m at 1,200 – 1,400 rpm, it provides sufficient power. The Weichai engine provides more energy saving and stronger power.

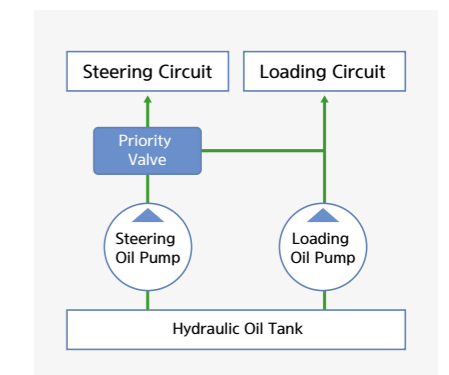


### Load Sensitive Hydraulic System

Load sensing steering directs power through the steering system only when the steering system needs the force. When not steering, more engine power is available to generate breakout force, lift force, and results in reduced fuel consumption.

### Dual Hydraulic Pump Confluence Technology

Due to dual pump confluence technology, hydraulic system conduct efficient work, fully utilizing pump.



### Large Capacity Fuel Tank for Long Working Time

Large capacity fuel tank (290 ℓ ) offers long working time.



### Large Displacement Booster Pump

Braking system has equipped large displacement booster pump ensure high reliability and safety.



## PROVEN RELIABILITY

The reliable components and solid frame structure not only improved the durability of the device, but also enhanced its work efficiency.

### Reliable and Proven Transmission with The Best Combination of Engine

Durable mechanical Transmission & Torque converter is best matching with Weichai WD10 engine. Transmission & Torque converter are reliable and easily for operation to suit in all requirements of working situations.

Due to the best matching, HL660 / 665 / 660L / 665L provides more powerful workability. Manual shifting mode, convenient for customers to choose gears according to actual conditions.



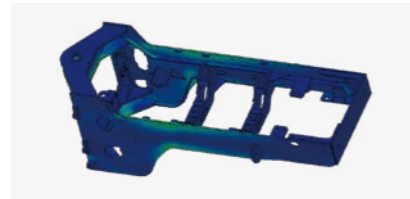
### Durable and Sturdy Axle

Durable mechanical and sturdy front and rear axle provides running stability, good performance even in poor jobsite conditions, and maximization of the operation capability.



### Firm and Durable Structural Parts

Extend product life and ensure superior running function using product structure of limited element analysis and optimization.



### Enhanced Cooling System

Large capacity radiator and coolers significantly improve thermal shock, impulse and vibration resistance and increase durability.



### Double Sealing Linkage

All hinged shaft holes adopt double sealing structure, which has good dustproof and sealing effect, fully guarantees internal lubrication and prolongs lubrication and aging for several thousand years.



### Spacious Cab with Excellent View

Spacious cab designed with ergonomics approach boasts low noise and excellent view, arc shaped front window, large rear window and side windows offer wide view in all directions.



\*Photo may include optional equipment.

## EASY AND COMFORTABLE OPERATION

Operating a HL600 Series wheel loader is unique to every operator. Operators can fully customize their work environment and operating preferences to fit their individual needs.

### Standard Large Capacity Air Conditioning

Large capacity, air circulation and defrost system make the space comfortable for operators.



### Excellent Air Circulation System

Excellent air conditioning and circulation system provide operators with more comfortable working environment.



### Suspension Seat

It can be adjusted to the position optimized for driver's weight and size reducing operator's fatigue.



### Rear Wiper Option

In case of rain, a lot of dust in the work environment, improving rear visibility.



\*ROPS / FOPS Only

### Large Side Mirror

Large side mirror ensures the operator's driving safety.



### Air Purification Filter

It effectively filters dusts out of the cab to keep the air clean and fresh.



### Centralized Monitoring Panel

Centralized monitoring panel designed with simplicity of ergonomics that shows working conditions and warning lights at a glance.



### Easy Controlled Rocker Switches

All the switches are arranged in concentrated and combined ways, easy to operate.



### Rear View Camera Option

Optional rear view camera helps you keep an extra eye on the jobsite.



### Headlight and Turn Signal

Lights are beautifully and durably designed.



### Customized Operation with Joystick Control



\*HL655 / HL655L Only

## SERVICEABILITY

The Hyundai HL600 Series is the ideal equipment for easy maintenance and service.

### Key-Locking Fuel Cap

The location of fuel cap increased accessibility and key locking function is applied for the prevention of vandalism.

### Oil Sight Gauge

The hydraulic oil check sight gauge is installed on the side of the hydraulic tank for the convenience of maintenance check from ground level.



### Quickly Changeable Brake Disc

The brake discs can be replaced quickly and easily without removing the tires, which saves maintenance time.



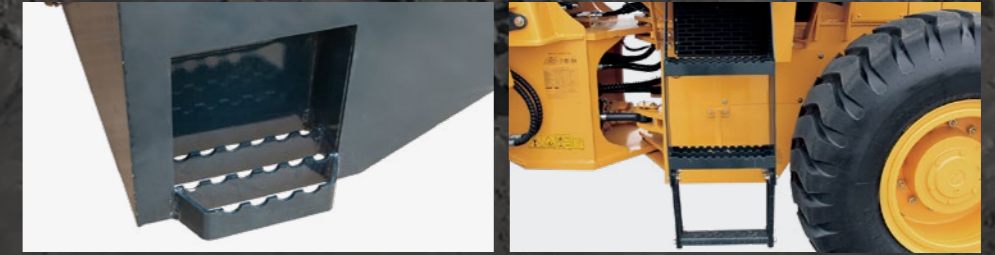
### Easy Access to Engine Compartment

Engine hood with two side wing flap opened door provide access for maintenance to easily replace engine components and perform daily maintenance.



### Non-Slip Platform

Non-slip platform and steps ensure operator's safety.



# DIMENSIONS & WORKING RANGE

## ENGINE

Description	HL660 / 665	HL660L / 665L
<b>Maker</b>	WEICHAI	WEICHAI
<b>Model</b>	WD10G220E23	WD10G220E23
<b>Emission regulation</b>	Tier II	Tier II
<b>Power (Gross)</b>	162 kW (217 hp) / 2,000 rpm	162 kW (217 hp) / 2,000 rpm
<b>Power (Net)</b>	146kW (196 hp) / 2,000 rpm	146kW (196 hp) / 2,000 rpm
<b>Max. torque</b>	900 N·m / 1,400 rpm	900 N·m / 1,400 rpm
<b>Displacement</b>	9.726 ℓ	9.726 ℓ
<b>No. of cylinders</b>	6 EA	6 EA

## TRANSMISSION

Description	HL660 / 665	HL660L / 665L
<b>Transmission type</b>	Planetary hydraulic shift	Planetary hydraulic shift
<b>Transmission configuration</b>	2F-1R	2F-1R
<b>Torque converter</b>	4 Elements single phase, twin-turbine	4 Elements single phase, twin-turbine
<b>Tire</b>	23.5-25 L3	23.5-25 L3
<b>Travel speed (F1)</b>	12 km/h	11.5 km/h
<b>Travel speed (F2)</b>	36 km/h	36 km/h
<b>Travel speed (R1)</b>	17 km/h	16 km/h

## AXLES

Description	HL660 / 665	HL660L / 665L
<b>Differential front type</b>	Conventional only	Conventional only
<b>Differential rear type</b>	Conventional only	Conventional only
<b>Rear axle oscillation</b>	±10 °	±10 °

## OVERVIEW

Description	HL660 / 665	HL660L / 665L
<b>Operating weight</b>	16,800 (17,330) kg	17,300 (18,000) kg
<b>Bucket capacity (Heaped)</b>	3 m³	3 m³
<b>Breakout force</b>	16,800 (16,000) kgf	17,000 (16,200) kgf
<b>Tipping load (Full turn)</b>	10,000 (8,700) kg	10,800 (10,000) kg
<b>Tipping load (Straight)</b>	10,272 (8,930) kg	11,300 (10,450) kg

\* ( ) : Long boom option

## HYDRAULIC SYSTEM

Description	HL660 / 665	HL660L / 665L
<b>Pump type</b>	Fixed gear pump	Fixed gear pump
<b>Flow rate</b>	160 lpm	160 lpm
<b>System pressure</b>	173 kgf/cm² (kPa)	163 kgf/cm² (kPa)
<b>Cycle time (Lift with load)</b>	5.1 sec	5.1 sec
<b>Cycle time (Dump with load)</b>	1.3 sec	1.6 sec
<b>Cycle time (Lower)</b>	4.2 sec	3.3 sec
<b>Cycle time (Total)</b>	10.6 sec	10 sec

## STEERING

Description	HL660 / 665	HL660L / 665L
<b>Pump Type</b>	Fixed gear pump	Fixed gear pump
<b>Flow rate</b>	80 lpm	80 lpm
<b>System pressure</b>	173 kgf/cm² (kPa)	163 kgf/cm² (kPa)
<b>Articulation angle</b>	35 °	35 °

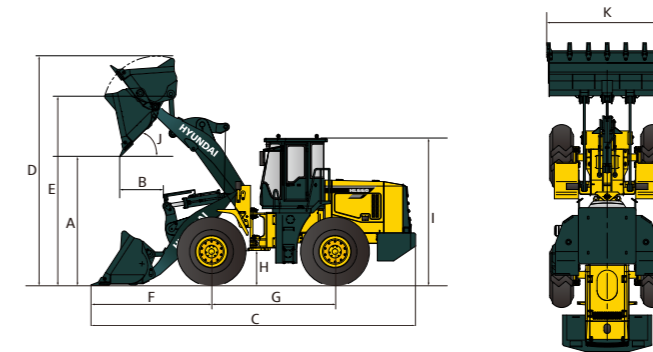
\* ( ) : Long boom option

## SERVICE REFILL CAPACITY

Description	HL660 / 665	HL660L / 665L
<b>Fuel tank (Refill)</b>	290 ℓ	290 ℓ
<b>Hydraulic tank</b>	210 ℓ	210 ℓ
<b>Hydraulic system (Including tank)</b>	290 ℓ	290 ℓ
<b>Coolant</b>	50 ℓ	50 ℓ
<b>Crank case</b>	22 ℓ	22 ℓ
<b>Transmission</b>	50 ℓ	50 ℓ
<b>Front axle</b>	44 ℓ	44 ℓ
<b>Rear axle</b>	44 ℓ	44 ℓ

## HL660 / 665 DIMENSIONS

All dimensions are approximate.

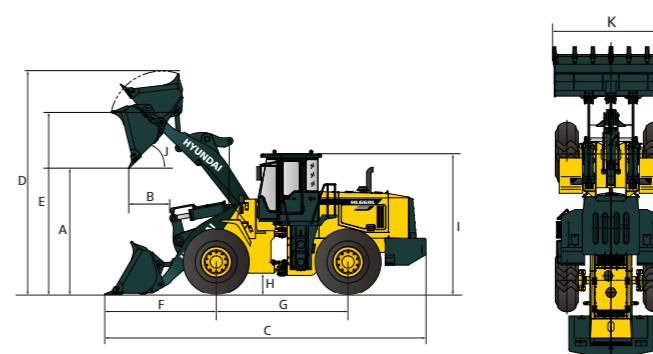


Description	Standard	Longboom OPT
A Dump clearance at 45° (Full lift)	3,150 mm	3,510 mm
B Reach at 45° (Full lift)	1,130 mm	1,170 mm
C Overall length (Ground)	7,750 mm	8,255 mm
Overall length (Carry)	7,580 mm	8,085 mm
D Overall height (Full raised)	5,314 mm	5,660 mm
E Bucket pivot max. height	4,151 mm	4,510 mm
F Front overhang	2,750 mm	3,255 mm
G Wheel base	2,920 mm	2,920 mm
H Ground clearance	512 mm	512 mm

Description	Standard	Longboom OPT
I Overall height (Cabin)	3,450 mm	3,450 mm
J Dump angle	45 °	45 °
K Overall width (with Bucket)	2,990 mm	2,990 mm
Overall width (without Bucket)	2,840 mm	2,840 mm
Rollback angle (Ground)	45 °	45 °
Rollback angle (Carry)	48 °	48 °
Clearance circle (Bucket)	13,340 mm	16,510 mm
Turning radius (Center of outside tire)	5,960mm	5,960mm

## HL660L / 665L DIMENSIONS

All dimensions are approximate.



Description	Standard	Longboom OPT
A Dump clearance at 45° (Full lift)	3,100 mm	3,520 mm
B Reach at 45° (Full lift)	1,220 mm	1,430 mm
C Overall length (Ground)	7,780 mm	8,320 mm
Overall length (Carry)	7,615 mm	7,075 mm
D Overall height (Full raised)	5,340 mm	5,652 mm
E Bucket pivot max. height	4,150 mm	4,527 mm
F Front overhang	2,605 mm	3,145 mm
G Wheel base	3,230 mm	3,230 mm
H Ground clearance	400 mm	400 mm

Description	Standard	Longboom OPT
I Overall height (Cabin)	3,410 mm	3,410 mm
J Dump angle	45 °	45 °
K Overall width (with Bucket)	2,990 mm	2,990 mm
Overall width (without Bucket)	2,840 mm	2,840 mm
Rollback angle (Ground)	45 °	45 °
Rollback angle (Carry)	49 °	49 °
Clearance circle (Bucket)	14,100 mm	16,640 mm
Turning radius (Center of outside tire)	6,295 mm	6,295 mm

## DIMENSIONS & WORKING RANGE

CAB & INTERIOR	STD	OPT
Alarms, audible and visual		
Brake pressure	●	
Charging indicator	●	
Parking brake	●	
Batteries, PT		
850 CCA, 12 V, (2)	●	
Gauges		
Hour table	●	
Engine oil pressure	●	
Coolant temperature	●	
Transmission oil temperature	●	
Brake pressure	●	
Battery voltage	●	
Fuel level	●	
Transmission pressure	●	
Horn, electric	●	
Indicator lights		
High beam	●	
Turn signal	●	
Lighting system		
Dome light	●	
2 Stop and tail lights	●	
4 Turn signals	●	
Brake lights (Counterweight)	●	
2 Working lights on front roof	●	
Switches		
Ignition	●	
Parking	●	
Cab (Sound suppressed and pressurized) with		
Cigar lighter & ashtray	●	
Coat hook	●	
Automatic climate control		
Air conditioner & heater	●	
Front intermittent wiper	●	
Seat		
2" retractable seat belt & adjustable		●
Personal storage space		
Console box	●	
Holder, can and cup	●	
Safety hammer	●	
Rear view mirrors (1 Inside)		●
Rear view mirrors (2 Outside)		●
Steering column	●	
Steering wheel with knob	●	
Roller type sunshade (Front window)	●	
Tinted safety glass	●	
Pedals		
One accelerator pedal	●	
One brake pedal	●	
Plastic wire circle floor mat	●	

## MEMO

ENGINE	STD	OPT
Antifreeze	●	
Engine, WEICHAH WD10G220E23		
Tier II	●	
Engine enclosure, lockable	●	
Engine fuel priming pump	●	
Fan guard	●	
Fuel / water separator (Return)	●	
Rain cap, engine air intake	●	
Radiator	●	
Big size radiator & tropical oil		●
Fuel heater	●	
Coolant level sight gauge	●	
Engine oil level dipstick gauge	●	
Oil bath air cleaner		●
Cold start package & arctic oil		●
POWER TRAIN	STD	OPT
Brake caliper	●	
Parking brake	●	
Torque converter	●	
Transmission F2 / R1, hydraulic control, manual shift	●	
Transmission oil sight level	●	
Tires		
23.5-25, 16PR, L3 (HL660 / 665)	●	
23.5-25, 18PR, L3 (HL660L / 665L)	●	
HYDRAULIC SYSTEM	STD	OPT
Boom kickout, automatic	●	
Diagnostic pressure taps	●	
Hydraulic oil cooler	●	
Hydraulic control, 2 spool	●	
Joystick control	●	
OTHER	STD	OPT
Articulation locking bar	●	
Counterweight	●	
Door and cab locks, one key	●	
Doors, service access (Locking)	●	
Drawbar with pin	●	
Ergonomically located and slip, resistant, left & right	●	
Handrails	●	
Ladders	●	
Platforms	●	
Steps	●	
Fenders (Front / rear)	●	
Hydraulic oil level sight gauge	●	
Lift and tie-down hooks	●	
Loader linkage, sealed	●	
Z-bar design	●	
Long boom		●
Rock bucket		●
Enlarged bucket		●
Oversize bucket (HL660L / 665L)		●
ROPS / FOPS Cabin (HL660L / 665L)		●
Rear window wiper		●
Rear work light		●
SAFETY	STD	OPT
Beacon light, rotating		●