

HL980

With Tier 3 / Stage IIIA Engine installed



Head Office(Sales Office)
11F, GLOBAL R&D CENTER, 477 BUNDANG SUSEO-RO, BUNDANG-GU, SEONGNAM-SI, GYEONGGI-DO, 13553, KOREA

PLEASE CONTACT

Gross Power (SAE J1,995)
335HP (250kW) at 2,100prm

Net Power
330HP (246kW) at 2,100prm

Bucket Capacity
5.6m³

Operating Weight
31,100 Kg (68,565lb)



WHAT'S NEWEST AND BEST

HL980

THE BEST PRODUCTIVITY AND FUEL EFFICIENCY

- Eco-friendly Tier-3 Engine
- Eco Report
- Smart Power Mode
- Hydraulic Differential Lock **Option**
- Electro-Hydraulic Control
- ICCO (Intelligent Clutch Cut Off)
- Automatic Engine Shut Down
- Engine Idle Booster

ULTIMATE DURABILITY

- Unified Control Valve
- Enhanced Axle Capacity
- Axle Oil Cooling System **Option**
- Sinter Brake Disk
- Optimized Drive Shaft
- High Quality Hydraulic Hose

EASY CONTROL AND COMFORTABLE OPERATION

- Fully Adjustable Seat and Armrest
- Remote Door Control **Option**
- Auto Greasing System **Option**
- Ride Control **Option**
- Full Sound-Proofed Spacious Cabin
- Wide Touch Screen Monitor
- Centralized Cluster
- Soft end Stop
- Weighing System

THE ULTIMATE SAFE ENVIRONMENT

- Emergency Stop
- Seat Belt Warning Alarm
- Radar **Option**
- AVM (Around View Monitoring) **Option**
- IMOD (Intelligent Moving Object Detection) **Option**

SERVICEABILITY AND TELEMATICS

- ECD(Engine Connected Diagnostics)
- Fully Openable Engine Hood
- Hi MATE **Option**
- Easy Filter Replacement
- Wide Core & Fin Radiator



* Photo may include optional equipment.



THE BEST PRODUCTIVITY AND FUEL EFFICIENCY

The new HYUNDAI HL980 is satisfying the Tier3 emission regulation and HL900 (T3) in wheel loader have a number of new features that contribute to overall fuel and also production efficiency.



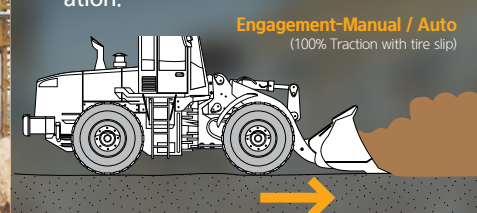
Smart Power Mode

Smart Power mode reduces fuel consumption by adjusting the engine speed in heavy load work like digging. The key point of this function is not only saving fuel with same performance as Power mode but also making good balance between traction force and breakout force.



Hydraulic Differential Lock Option

Hydraulic differential lock has the advantages of both improving productivity and less fuel consumption by preventing tire slip during the operation.



Electro-Hydraulic Control

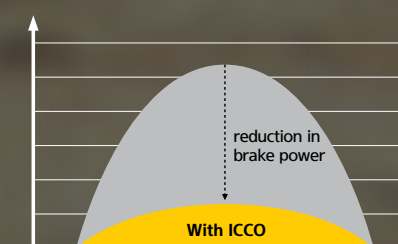
With improved precision and operability, the electro-hydraulic control system of the HL900 (T3) Series provides diverse functions and easy handling to control any working conditions, increasing productivity and reducing fatigue of operators.

* Fine operation/bucket priority / Auxiliary attachment max flow / Soft end stop



ICCO (Intelligent Clutch Cut Off)

By selecting of 'H-Mode' among clutch cut-off selections, ICCO will be engaged for both less power loss in torque converter and lower heat generation on brake sides.



* Photo may include optional equipment.



Tier-III Engine

'Cummins X12' engine meeting Tier-III emission regulations is designed for maximum productivity and fuel efficiency.

Eco Report

Eco report shows the wheel loader's inefficient operation status in order to improve operator's improper working habit.



Automatic Engine Shut Down

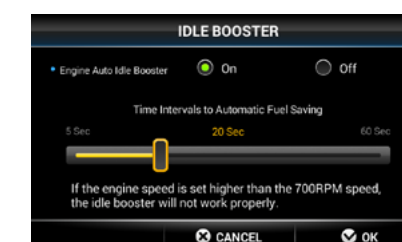
Adjustable 'Automatic engine shut down' significantly reduces idle time, overall operating hours and fuel consumption.



Engine Idle Booster

Hyundai's HL900 (T3) Series provide "Engine Idle Booster" that increases idle rpm to '900' automatically for better operating condition and prompt reaction.

If the equipment is not used for more than the interval time set by the operator, rpm will be dropped down to default idle rpm.



Unified Control Valve

HL980 improved hydraulic system. Unified control valve system removes the hydraulic hose connected with each valve and has fewer leak points. Because MCV is integrated with ride control valve and EPPR valve.

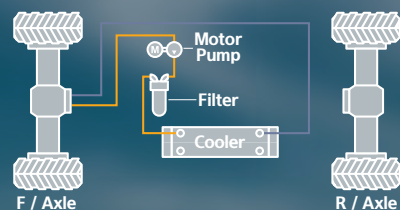
Enhanced Axle Capacity

HL980 applied larger capacity rear axle than the previous series. It offers more reliable performance and longer durability.



Axle Oil Cooling System Option

Axle oil cooling system prevents overheating of axle oil caused by frequent braking and high-load work.



Sinter Brake Disc

The HL900 (T3) Series has a sinter disc of a new material with excellent durability to suppress generation of heat and vibration, heightening brake durability and enabling convenient maintenance with a service-friendly design.



Optimized Drive Shaft

Through thorough verification, the optimized drive shaft makes the HL980 wheel loader more durable.

High Quality Hydraulic Hose

High quality hydraulic hoses increased durability and product life cycle.



ULTIMATE DURABILITY

The true value of the HL980, which is now far more powerful, is revealed in tough working environments. With the high-strength design structure and enduring system proven by rigorous road tests at various work sites, Hyundai wheel loaders can perform any high-load work to maximize productivity.





EASY CONTROL AND COMFORTABLE OPERATION

The HL980 is optimized to enable operators to access accurate equipment data in a timely manner. This feature is more important in tough working environments to increase productivity while enjoying various forms of entertainment. Enjoy unparalleled satisfaction provided by infotainment of Hyundai's state-of-the-art information technology!

*Photo may include optional equipment.

Electro-Hydraulic Control Lever

Hyundai's wheel loaders have an electro-hydraulic control lever. Operators can operate attachments with less strength, enabling greater productivity and minimizing fatigue of operators. (Roller switch for AUX SPOOL Control)



Fully Adjustable Seat and Armrest

This suspension will be applied for minimizing an operator's fatigue.



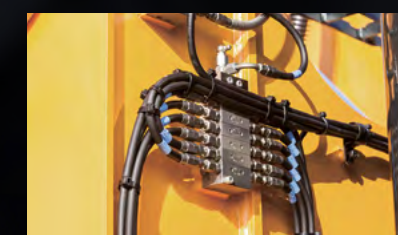
Ride Control Option

Ride control system reduces operator fatigue and material spillage during operation. An accumulator helps to minimize shock, giving the operator a much smoother ride.



Auto Greasing System Option

Auto greasing system is designed to automatically lubricate when it is needed. Uniform application of lubricant ensures that the lubrication points always have the correct amount of grease.



New Air Conditioning System

Hyundai's wheel loaders maximize heating and cooling performance by optimizing air flow. The air conditioning system is placed on the right side of the cabin to ensure easy maintenance and filter replacement. The capacity of the inner filter was increased. Filter material was changed for superior filtering performance.



Full Sound-Proofed Spacious Cabin

State-of-the-art noise reduction technology of the HL980 ensures maximum silence(73dB) in the same category of equipment, promising more silent and more pleasant interior space.



Remote Door Control Option

Remote door control allows operators to open the cabin door remotely. This system was developed for the convenience and safety of the operator.



Wide Touch Screen Monitor

The seven-inch capacitive-type display (like a smart phone display) provides excellent legibility.



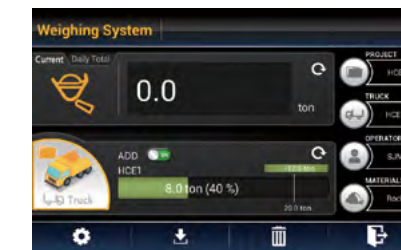
Centralized Cluster

With a centralized cluster, operator can see at a glance all the states of wheel loader.



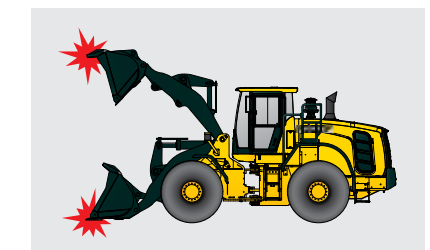
Weighing System

The HL980 further improves work precision with additional weight calibration. The automatic/manual cumulative weighing function greatly enhances operating efficiency. Icons displaying weighing errors and the two-color weight value indication on the monitor enable accurate weighing to support efficient production management.



Soft End Stop

When an attachment reaches at the end stroke, it gives operator enormous shock especially for Boom up. This function gives shock free operation by reducing the speed of attachment near the end stroke. It can be selected on/off through Monitor.





THE ULTIMATE SAFE ENVIRONMENT

With the top priority on satisfaction of operators in terms of silence, safety and maintainability, Hyundai wheel loaders provide operators with comfortable cabin space by low-vibration, low-noise, and superior safety design. They also offer greater satisfaction by extending the replacement cycle of supplies and minimizing maintenance time and cost.



HL980 with advanced technology ensures our safety on a construction site.



The HL900(T3) in wheel loaders are products of HCE's spirit of initiative, creativity, and strong drive. HCE engineers, who are the best in the industry, have worked tirelessly to offer a zero-defect product. HL900(T3) in wheel loaders reflects customers' needs in the field gleaned by thorough monitoring.

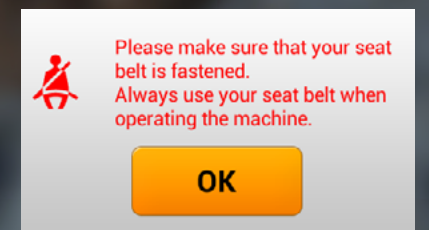
Emergency Stop

In an emergency, operating the Emergency Stop switch located at the bottom of the seat will shut down the engine starting.



Seat Belt Warning Alarm

Seat belt warning alarm allows the operator to work in a safer environment.



Radar Option

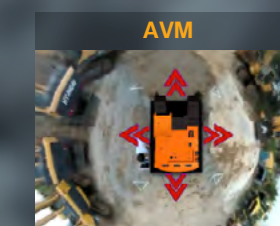
The Radar system can detect rear obstacles without blind spots and no distinction between day and night. Also, the warning level of the nearest obstacle is always displayed on the secondary monitor.



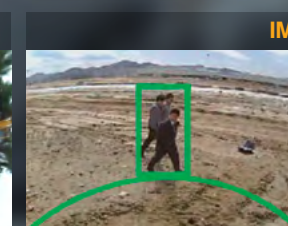
AVM(Around View Monitoring) Option

IMOD(Intelligent Moving Object Detection) Option

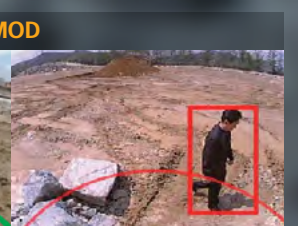
This is a system that is combined AVM (Around View Monitoring) with IMOD (Intelligent Moving Object Detection) and detects people around the machine and analyzes the images, which displays a warning sign on a monitor when detecting the danger. So operators can watch the surroundings in a variety of angles through the monitor and prevent the safety accident in advance.



It displays the position of people with a top view.



A green warning sign is displayed when people move in within a 5-meters radius.



A red warning sign is displayed when people move in within a 3-meters radius.

Options may include optional equipment.



SERVICEABILITY AND TELEMATICS

IoT, ICT, AI-based digital technologies is creating smart construction sites. Maximizes connectivity, productivity, and safety for your successful businesses.



*Photo may include optional equipment.

Hi MATE

Option

IT'S CONVENIENT, EASY AND VALUABLE

Hi MATE Hyundai's newly developed remote management system, utilizes GPS-satellite technology to provide customers with the highest level of service and product support available. Hi MATE enables users to remotely evaluate machine performance, access diagnostic information, and verify machine locations at the touch of a button.

WHAT IS BENEFITS



Increase Productivity

It helps you operate machines in efficient. You can check the difference between total engine hours and actual working hours. See how productive your machines are and plan any required cost saving solutions. Hi MATE offers working information such as working / idling hours, fuel consumption and rate.



Convenient and Easy Monitoring

There is nothing much to do to monitor your machines. Just log on to the Hi MATE website or mobile application. Hi MATE allows you to watch your machines whenever and wherever you are.



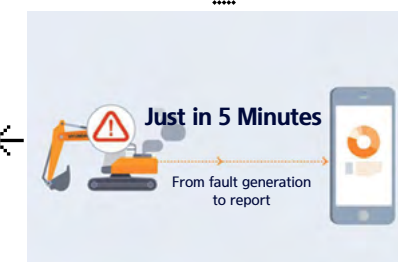
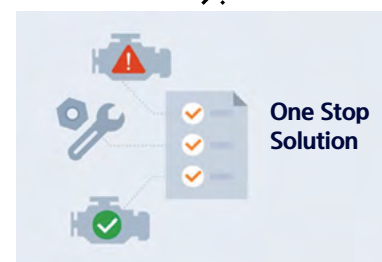
Security

Protect your machines from theft or unauthorized usage with Hi MATE. If the machine moves out of the Geo-fence boundary, you will get alerts.

ECD(Engine Connected Diagnostics)

It supports service technician with remote diagnostics report and ensure it arrive on site with proper tools after preparing in advance.

We are all connected



Fully Openable Engine Hood

The HL980 has improved accessibility to the sealed engine room with retractable hood to allow easy cleaning and maintenance. The engine room was designed to prevent possibility of fire due to inflow of foreign materials. The fully retractable engine hood in the electric actuator opening mode also enhances maintainability of the engine room and cooling room.



Easy Filter Replacement

With easy filter replacement, machine can be managed more easily.



Wide Core & Fin Radiator

Wide core & fin radiator reduces clogging.



SPECIFICATIONS

ENGINE	
Maker / Model	CUMMINS / X12
Type	4-cycle, turbocharged, charge air cooled, electronic controled diesel engine
Gross power	335 HP (250 kW) at 2,100 rpm
Net power	330 HP (246 kW) at 2,100 rpm
Max. Power	370 HP (276 kW) at 1,700 rpm
Peak Torque	1,674 N · m (1,235 lb.ft) at 1,400 rpm
Displacement	11.8 ℓ (720 cu in)

TRANSMISSION			
4-speed transmission	Model	4WG310	
	Type	Torque Converter Type	3-Elements, Single-stage,-phase
		Transmission	Full-automatic power shift
Travel speed		4 Speed T/M	
		km/h	(mph)
Forward	1st	6.2	(3.9)
	2nd	11.7	(7.3)
	3rd	18.4	(11.4)
	4th	38.2	(23.7)
Reverse	1st	6.2	(3.9)
	2nd	11.7	(7.3)
	3rd	25.7	(16)
Brake Distance		m	(ft/in)
		12.3	(40' 4")

• This is the maximum travel speed of a standard machine with unfilled bucket.

AXLES	
Drive system	Four-wheel drive system
Front	Fixed
Rear	Oscillating ±12 degrees
Hub reduction	Planetary reduction at wheel end
Differential	Limited Slip Differential
Reduction ratio	27

TIRES	
Type	Tubeless, loader design tyres
Standard	29.5R25 L3 ★★
Options Include	29.5-25 L5 28PR
	29.5R25 L3 XHA2 ★★
	29.5-25 L3 22PR

BRAKES	
Service Brakes	Hydraulically actuated, wet disc brakes actuate all 4 wheels, independent axle-by-axle system. Self adjusting & wheel speed brake.
Parking Brake	Spring-applied, hydraulically released brake
Emergency Brake	When brake oil pressure drops, indicator light alerts operator and parking brake automatically applies.

CABIN
ROPS / FOPS meet ISO 3471 and ISO 3449

HYDRAULIC SYSTEM		
Type	Load sensing hydraulic system	
Pump	Variable displacement piston pump	
Rated oil quantity	452 ℓ /min (119.3 U.S.gpm)	
Control Valve	2 Spool (Bucket, Boom) 3 Spool (Bucket, Boom, Aux)	
System Pressure	280bar (4,061 psi)	
Lift Circuit	The valve has four functions; Raise / Hold / Lower / Float Can adjust automatic kickout from horizontal to full lift.	
Tilt Circuit	The valve has three functions: Tilt back / Hold / Dump Can adjust automatic bucket positioner to desired load angle.	
Cylinder	Type: double acting	
	"No. of cylinders-bore X stroke"	Lift 2-165 x 780mm (6.5" x 2'7")
		Tilt 1-180 x 565mm (7.1" x 1'10")
Hydraulic Cycle Time with Rated Payload	Raise from Carry Position: 6.2 Sec.	
	Dump, at maximum raise: 1.5 Sec.	
	Lower, empty, float down: 4.5 Sec.	
	Total: 12.2 Sec.	

STEERING SYSTEM	
Type	Load sensing hydrostatic articulated steering
Pump	Variable displacement piston pump
Rated oil quantity	237 ℓ /min (62.6 U.S.gpm)
System Pressure	210 bar (3,046 psi)
Cylinder	Double acting
Steering Angle	40° to both right and left angle, respectively
Features	Center-point frame articulation. Tilt and telescopic steering column.

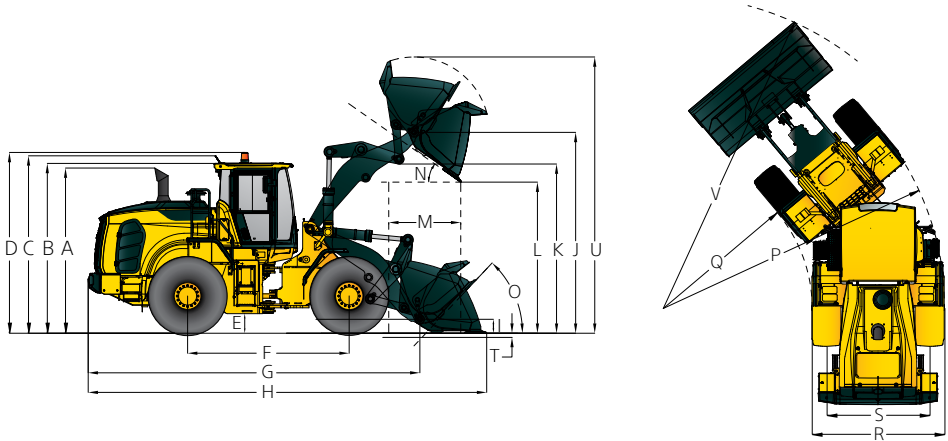
* Hyundai Bio Hydraulic Oil (HBHO) available

SERVICE REFILL CAPACITIES	
Fuel tank	430.0 liters (113.6 US gal)
Cooling system	45.5 liters (12 US gal)
Engine Oil	34.0 liters (9 US gal)
Transmission	50.8 liters (13.4 US gal)
Front axle	64.0 liters (16.9 US gal)
Rear axle	64.0 liters (16.9 US gal)
Hydraulic tank	184.0 liters (48.6 US gal)
Hydraulic system (Including tank)	340.0 liters (89.8 US gal)

SOUND	
Guaranteed noise level presented below can be differed depending on a range of factors such as operating condition, speed of a cooling fan, types of engine and so forth. Hearing protection shall be necessary if an operator is working in the improperly maintained cabin or exposed to a noisy environment by leaving doors and/or windows open.	
With cooling fan speed at maximum value:	
Operator sound pressure level (ISO 6396:2008)	73 dB(A)
Exterior sound power level (ISO 6395:2008)	109 dB(A)

DIMENSIONS & SPECIFICATIONS

HL980 DIMENSIONS
All dimensions are approximate



Unit : mm (ft · in)

Description		Unit	HL980		HL980 XT	
A	Height to Top of Exhaust Pipe	mm ft/in	3,715	12'2"	3,715	12'2"
B	Height to Top of Cabin	mm ft/in	3,865	12'8"	3,865	12'8"
C	Height to Top of Product Link Antenna	mm ft/in	3,905	12'10"	3,905	12'10"
D	Height to Top of Warning Beacon	mm ft/in	3,995	13'1"	3,995	13'1"
E	Ground clearance	mm ft/in	495	1'7"	495	1'7"
F	Wheelbase	mm ft/in	3,700	12'2"	3,700	12'2"
G	Overall Length(without bucket)	mm ft/in	8,175	26'10"	8,495	27'10"
H	Shipping length(with bucket level on ground)	mm ft/in	9,610	31'6"	9,930	32'7"
I	Hinge Pin Height at Carry Position	mm ft/in	535	1'9"	630	2'1"
J	Hinge Pin Height at Maximum Lift	mm ft/in	4,615	15'2"	4,935	16'2"
K	Lift Arm Clearance at Maximum lift	mm ft/in	3,870	12'8"	4,190	13'9"
L	Dump Clearance at Maximum lift and 45 ° Discharge	mm ft/in	3,300	10'10"	3,620	11'11"
M	Reach at Maximum Lift and 45 ° Discharge	mm ft/in	1,490	4'11"	1,525	5'0"
N	Dump Angle at Maximum Lift and Dump(on stops)	degree	50		50	
O	Roll back Angle	Ground	degree 42		42	
		Carry	degree 47		47	
P	Clearance Circle(diameter) to Outside of Tires	mm ft/in	13,615	44'8"	13,615	44'8"
Q	Clearance Circle(diameter) to Inside of Tires	mm ft/in	7,110	23'4"	7,110	23'4"
Turning radius (center of outside tire)		mm ft/in	6,425	21'1"	6,425	21'1"
R	Width over Tires(unloaded)	mm ft/in	3,190	10'6"	3,190	10'6"
R	Overall Width	mm ft/in	3,450	11'4"	3,450	11'4"
S	Tread Width	mm ft/in	2,440	8'0"	2,440	8'0"
Gradeability		degree	30		30	

DIMENSIONS & SPECIFICATIONS

OPERATING SPECIFICATIONS WITH BUCKETS					
General Purpose Pin On					High Lift Linkage Change
Linkage Bucket Type					
Edge Type	Bolt-On Cutting Edges Type	Bolt-On Cutting Edges Type	2-Bolt-On Tooth Type	2-Bolt-On Tooth & Segment Edge Type	
Capacity - Rated	5.6 m³ (7.30 yd³)	6.3 m³ (8.20 yd³)	5.6 m³ (7.30 yd³)	5.0 m³ (6.50 yd³)	-
Capacity - Rated at 110% Fill Factor	6.2 m³ (8.10 yd³)	6.9 m³ (9.10 yd³)	6.2 m³ (8.10 yd³)	5.5 m³ (7.20 yd³)	-
Width	3,450 mm (11' 4" ft/in)	3,450 mm (11' 4" ft/in)	3,500 mm (11' 6" ft/in)	3,490 mm (11' 5" ft/in)	-
Dump Clearance at Maximum Lift and 45° Discharge	3,330 mm (10' 10" ft/in)	3,215 mm (10' 7" ft/in)	3,150 mm (10' 4" ft/in)	3,035 mm (9' 11" ft/in)	320 mm (1' 1" ft/in)
Reach at Maximum Lift and 45° Discharge	1,490 mm (4' 11" ft/in)	1,575 mm (5' 2" ft/in)	1,610 mm (5' 3" ft/in)	1,685 mm (5' 6" ft/in)	35 mm (0.1" ft/in)
Digging Depth	105 mm (0' 4" ft/in)	105 mm (0' 4" ft/in)	125 mm (0' 5" ft/in)	155 mm (0' 6" ft/in)	10 mm (0.0" ft/in)
Shipping Length (with Bucket)	9,610 mm (31' 6" ft/in)	9,730 mm (31' 11" ft/in)	9,800 mm (32' 2" ft/in)	9,935 mm (32' 7" ft/in)	320 mm (1' 1" ft/in)
Overall Height with Bucket at Maximum Lift	6,430 mm (21' 1" ft/in)	6,580 mm (21' 7" ft/in)	6,430 mm (21' 1" ft/in)	6,340 mm (20' 10" ft/in)	315 mm (1' 1" ft/in)
Loader Clearance Circle with Bucket at Carry Position	15,270 mm (50' 1" ft/in)	15,340 mm (50' 4" ft/in)	15,450 mm (50' 8" ft/in)	15,320 mm (50' 3" ft/in)	330 mm (1' 1" ft/in)
Static Tipping Load, Straight (No Tire Deflection)	23,245 kg (51,250 lb)	22,945 kg (50,590 lb)	23,045 kg (50,810 lb)	22,495 kg (49,595 lb)	-2,695 kg (-5,940 lb)
Static Tipping Load, Articulated (No Tire Deflection)	20,220 kg (44,580 lb)	19,970 kg (44,030 lb)	20,020 kg (44,140 lb)	19,620 kg (43,255 lb)	-2,470 kg (-5,445 lb)
Breakout Force	24,670 kg (54,390 lb)	22,800 kg (50,270 lb)	24,670 kg (54,390 lb)	22,620 kg (49,870 lb)	-270 kg (-595 lb)
Operating Weight*	31,100 kg (68,565 lb)	31,275 kg (68,950 lb)	31,280 kg (68,965 lb)	31,715 kg (69,920 lb)	150 kg (335 lb)

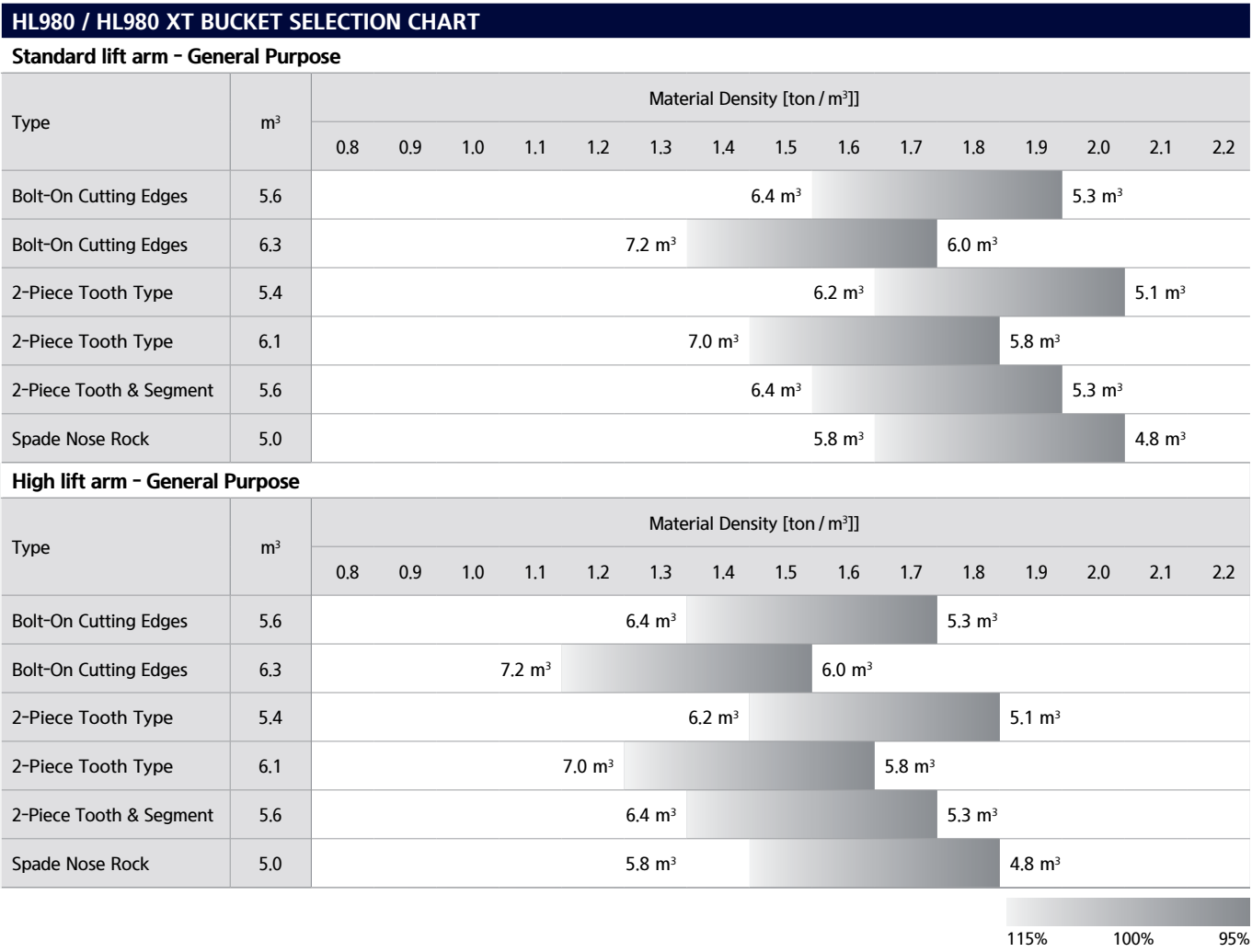
* All height and tire related dimensions are with standard 23.5 R25, L3 tires.

CHANGE IN OPERATING SPECIFICATIONS - TIRES				
Tires		29.5R25 XHA2 ★	29.5-25 L3 22PR	29.5-25 L5 28PR
Operating weight(kg)	kg	-255	-590	660
	lb	-560	-1300	1460
Static Tipping Load, Straight (No Tire Deflection)	kg	-185	-430	480
	lb	-405	-945	1060
Static Tipping Load, Articulated (No Tire Deflection)	kg	-160	-370	415
	lb	-350	-815	920
Vertical height changes	mm	-7	-2	16
	ft/in	-0.3"	-0.1"	0.6"
R. Width over tires(unloaded)	mm	-2	30	23
	ft/in	-0.1"	1.2"	0.9"
P. Clearance Circle(diameter) to Outside of Tires	mm	-2	30	23
	ft/in	-0.1"	1.2"	0.9"
Q. Clearance Circle(diameter) to Inside of Tires	mm	2	-30	-23
	ft/in	0.1"	-1.2"	-0.9"

** Dimension changes compared to 26.5R25 L3 ★ radial tires.

BUCKET SELECTION CHART / SPECIFICATIONS

DENSITY OF OPERATING MATERIALS		
Loose Material		Material Density [ton / m³]
Earth / Clay		1.5 ~ 1.7
Sand and Gravel		1.5 ~ 1.7
Aggregate	25 ~ 76 mm (1 to 3 in)	1.6 ~ 1.7
	19mm (0.75 in) and Larger	1.8



OVERVIEW								
Model			unit		HL980		HL980 XT	
Operating weight			kg	lb	31,100	68,565	31,250	68,895
Bucket capacity	Heaped		m³	yd³	5.60	7.30	5.60	7.30
	Struck		m³	yd³	4.80	6.30	4.80	6.30
Breakout force-bucket			kg	lb	24,670	54,390	24,400	53,795
Tipping Load	Straight		kg	lb	23,245	51,250	20,550	45,305
	Full		kg	lb	20,220	44,850	17,750	39,135

STANDARD / OPTION

CABIN & INTERIOR	STD	OPT
ALARMS, AUDIBLE AND VISUAL		
Air filter clogging	●	
Battery voltage	●	
Brake oil pressure	●	
Engine coolant level	●	
Engine oil pressure	●	
Fuel level	●	
Hydraulic oil temperature	●	
Engine coolant temperature	●	
Engine stop	●	
Emergency warning lamp	●	
Transmission error	●	
Transmission oil temperature	●	
BATTERIES		
1,315 CCA, 12 V, 2 pcs	●	
GAUGES		
Engine coolant temperature	●	
Fuel level	●	
Speedometer	●	
Transmission oil temperature	●	
INDICATOR LIGHTS		
Parking brake	●	
High beam	●	
Pilot cut off	●	
Turning light	●	
Seat belt ON/OFF	●	
Engine auto stop	●	
Clutch Cut Off	●	
Ride control		●
Joystick steering		●
FNR		●
Differential Lock		●
LCD DISPLAY (CLUSTER)		
Transmission gear range	●	
Parking brake	●	
FWD / REV	●	
LCD DISPLAY (MONITOR)		
Engine rpm	●	
Fuel rate	●	
Fault and maintenance warning	●	
Odometer	●	
Hour meter	●	
Horn, electric	●	
LIGHTING SYSTEM		
Brake lights (Counterweight)	●	
LED dome light	●	
2 stop and tail lights	●	
4 turn signals	●	
2 Head lights on front tower		●
2 Head lights (LED) on front tower	●	
2 Working lights on front roof		●
4 Working lights on front roof		●
2 Working lights on rear roof		●
4 Working lights on front roof	●	
2 Working lights on rear roof		
2 Working lights on grill		●
2 Working lights (LED) on grill	●	
IGNITION		
Key	●	
Button		●

CABIN & INTERIOR	STD	OPT
SWITCHES		
Hazard	●	
Engine hood open	●	
Parking	●	
Battery master switch	●	
FNR shifter	●	
Pilot cut off	●	
Differential Lock foot switch		●
Emergency steering		●
MEMBRANE SWITCHES IN MONITOR		
Main light	●	
Work light	●	
Weighing System	●	
Mirror heat	●	
Auto position	●	
Fine modulation	●	
Rear wiper	●	
Auto grease		●
Ride control		●
Beacon light		●
Cam		●
CABIN (SOUND SUPPRESSED)		
ROPS/ FOPS Cabin	●	
Coat hook	●	
Rear view mirrors (1 Inside / 2 Outside, heated)	●	
Steering column, tilt and telescopic	●	
Steering wheel with knob	●	
Roller type sunshade (Front window)	●	
Roller type sunshade (Rear window)		●
Tinted safety glass	●	
Magazine pocket	●	
Radio / USB player	●	
Wrist rest & Armrest	●	
24 V to 12 V DC converter (20 A)	●	
DOOR		
Door and cabin locks, one key	●	
Doors, service access (Locking)		●
Doors, service access (Remote control)		●
AUTOMATIC CLIMATE CONTROL		
Air conditioner & heater	●	
Defroster	●	
Intermittent wiper and washer, front and rear	●	
SEAT		
3" Retractable seat belt & adjustable air suspension (heated)		●
PERSONAL STORAGE SPACE		
Console box	●	
Cup Holder	●	
PEDALS		
One brake pedal	●	
Dual-Brake pedal		●

ENGINE	STD	OPT
ENGINE, CUMMINS, X12	●	
POWER TRAIN		
Transmission F4 / R3, computer controlled, electronic soft shift, auto-shift and kick-down features included	●	
Torque converter	●	
Transmission oil sight level	●	
Transmission oil cooler	●	
Travel speed limiter (20-40 km/h)	●	
FRONT AXLE		
Hydraulic lock differential	●	
REAR AXLE		
Conventional Type	●	
BRAKE		
Service brake (Enclosed wet-disk)	●	
Parking brake	●	
TIRES		
29.5R25, L3, ★★	●	
29.5-25, L5, 28PR		●
29.5R25, XHA2, ★★		●
29.5-25, L3, 22PR		●
HYDRAULIC SYSTEM		
Boom kickout, automatic	●	
Bucket positioner, automatic	●	
Diagnostic pressure taps	●	
Hydraulic oil cooler	●	
Hydraulic oil level sight gauge	●	
EH Control (Joystick)	●	
EH Control (Fingertip)		●
Ride control system		●
Extra piping-for auxiliary function		●
Auto grease system		●
SAFETY		
Emergency Stop	●	
Emergency steering		●
Rear View Camera		●
Fire extinguisher		●
Boom safety bar		●
OBJECT DETECTION		
AAVM (AVM + IMOD)		●
Radar + Secondary Monitor		●
TELEMATICS		
Hi MATE		●
ECD (Engine Connected Diagnostics)	●	
OTHERS		
Fuel Warmer	●	
Articulation locking bar	●	
Lift and tie-down hooks	●	
Loader linkage, sealed	●	
Vandalism protection caplocks	●	
E-Horn	●	
Tool kit		●
BUCKET		
5.6m³ Bolt-On Cutting Edges Type	●	
6.3m³ Bolt-On Cutting Edges Type		●
5.4m³ 2-Piece Tooth Type		●
6.1m³ 2-Piece Tooth Type		●
5.6m³ 2-Piece Tooth & Segment Type		●
5.0m³ Spade Nose Rock Type		●

OTHERS	STD	OPT
COUNTERWEIGHT		
Counterweight - Heavy weight	●	
Drawbar pin	●	
ERGONOMICALLY LOCATED AND SLIP RESISTANT, LEFT & RIGHT		
Handrails / Ladders / Platforms / Steps	●	
GUARDS		
Fenders (Front / Rear)	●	
Under Guard (E/G, T/M)		●
Mud Guard		●
TELEMETICS		
ECD (Engine connected Diagnostics)	●	
Hi-Mate		●

* Standard and optional equipment may vary.
Contact your Hyundai dealer for more information. The machine may vary according to International standards.
* The photos may include attachments and optional equipment that are not available in your area.
* Materials and specifications are subject to change without advance notice.
* All imperial measurements rounded off to the nearest pound or inch.