

OPTION LIST

ENGINE
Big size radiator & tropical oil
Fuel heater
Oil bath air cleaner
Cold start package & arctic oil
POWER TRAIN
Tires
Solid tire
23.5 R25 REM2 tire
HYDRAULIC SYSTEM
Hydraulic control, 3 spool
SAFETY
Beacon light, rotating
OTHER
High lift boom
Short boom
Side dump
ROPS/ FOPS Cabin

HL665XL BUCKET OPTION		
Rock Bucket	2.7m ^³	Tooth
Sand Stone Bucket	3.3m ^³	Tooth
Coal Bucket	3.5m ^³	Tooth
		Cutting Edge
	4.0M ^³	Tooth
Enlarged Bucket	4.5m ^³	Tooth
		Cutting Edge
HL675XL BUCKET OPTION		
Rock Bucket	3.0m ^³	Tooth
Coal Bucket	3.8m ^³	Tooth
	4.0m ^³	Tooth
Enlarged Bucket	4.5m ^³	Tooth
		Cutting Edge

MATERIAL HANDLER PACKAGE (ONLY FOR HL665XL)

ATTACHMENT			
Quick coupler	Weight	kg	479
	Overall Dimensions (L×W×H)	mm	1416×492×800
Pallet fork	Load Capacity	kg	5000
	Overall Dimensions (L×W×H)	mm	2146×1892×1097
	Length of Fork	mm	1800
	Retraction Angle of Fork	/	15°
	Overall Dimensions (L×W×H)	mm	1750×2300×1600
Log fork	Load Capacity	kg	5000
	Maximum Opening	mm	1900
	Overall Weight	kg	1460
	Minimum Circle Diameter	mm	1160
Grass grapple	LOAD CAPACITY	kg	5000
	MAXIMUM OPENING	mm	2568
	OVERALL DIMENSIONS (L×W×H)	mm	1860×2456×1550
	OVERALL LENGTH	mm	1958
Jib crane	OVERALL WIDTH	mm	1540
	OVERALL HEIGHT	mm	1028
	MAX LOAD WEIGHT	t	5
	OVERALL WEIGHT (INCLUDED ATTACHMENT)	kg	459



Head Office(Sales Office)
11F, GLOBAL R&D CENTER, 477 BUNDANG SUSEO-RO, BUNDANG-GU, SEONGNAM-SI, GYEONGGI-DO, 13553, KOREA

HL665XL
HL675XL

With Tier 2 / Stage II Engine Installed



* Photo may include optional equipment.

Model	Gross Power	Bucket Capacity	Operating Weight
HL665XL	162 kW at 2,200 rpm	3.3m³	18,300 kg
HL675XL	175 kW at 2,200 rpm	3.5m³	19,500 kg

PLEASE CONTACT



HYUNDAI X SERIES WHEEL LOADER PREMIUM PERFORMANCE, REFINED DESIGN

Next-generation cabin experience, engineering for tomorrow's challenges.
More than just a loader, the HL665XL/HL675XL represents the pinnacle of equipment design, where every detail reflects an uncompromising commitment to excellence. For operators who demand both performance and prestige, this is the new standard.

PRECISION-BALANCED PERFORMANCE AND ADVANCED EFFICIENCY

- Powerful, fuel efficient and energy-saving engine
- Smart shift auto-transmission
- STD 3.3m³ (HL665XL) & 3.5m³ (HL675XL) bucket
- Improved hydraulic pilot control system
- Enlarged coal vent holes
- Enlarged radiator **Option**
- Cold start **Option**
- MCV (3 spool) **Option**
- Wide tires (23.5R25 REM2)

RELIABILITY REDefined: DURABLE COMPONENTS & DEVICE

- Heavy-duty axle system
- Durable structure design
- Optimized radiator design
- Big size radiator **Option**
- Double sealing linkage

EASY ACCESS, FASTER MAINTENANCE

- Larger hood design
- Easy maintenance filter structure
- Oil sight gauge
- Centralized battery
- Quickly changeable brake disc
- Internal bolt/nut teeth configuration

EVERY DETAIL FOR YOUR COMFORT: PREMIUM CABIN & INTELLIGENT CONTROL

- New-gen cabin
- Suspension seat & seat belts
- LCD cluster
- Multi-directional air vents
- Rear view camera
- Rear view mirror
- LED lights (total 6 EA)
- Streamlined interface & dual USB ports
- ROPS & FOPS **Option**
- Beacon lamp **Option**



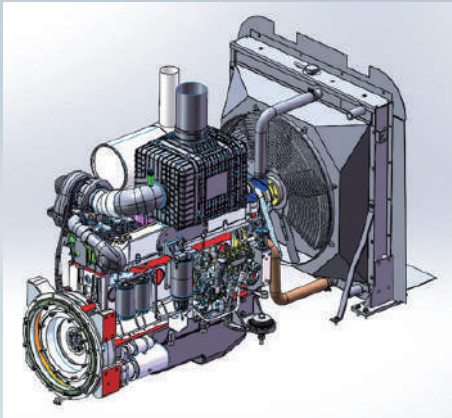
PRECISION-BALANCED PERFORMANCE AND ADVANCED EFFICIENCY

Max. Speed	Operating Weight
37.0 km/h	17,800/19,500 kg
Bucket Capacity	Power (Gross)
3.3/3.5 m ³	162/2,000, 170/2,000 kW/rpm



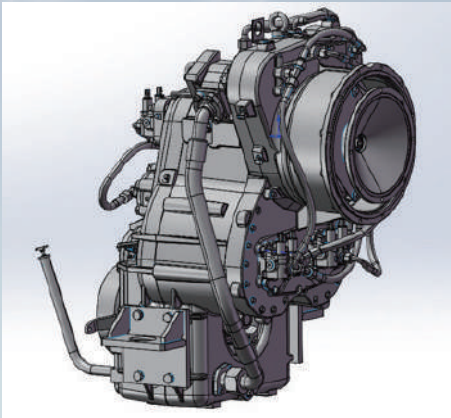
Powerful, Fuel Efficient and Energy-Saving Engine

- HL665XL, HL675XL equipped with 162kW, 175kW Weichai engine deliver robust power, low fuel consumption, and eco-friendly compliance.
- High grade Air filter + heated intake grille for reliable starts in extreme conditions.



Smart Shift Auto-transmission

- Fully automatic transmission with optimized gear engagement for seamless power delivery.
- 4-Forward/4-Reverse Gears: Flexible speed control for diverse operational demands.
- Proportional control valve enables manual/ auto shifting modes and multi-layered protections.



Upgraded Hydraulic Pilot Control System

- Added an accumulator to the original hydraulic pilot control system, allowing the boom to be lowered even when the engine is off, improving product safety.
- Installed a pilot filter in the pilot control lines to reduce impurities and minimize failure rates.



New Cowl Design

- The next-generation cowl vent system redefines loader design to measurable improvements in radiator cooling performance through precision engineering, delivering both functional and visual upgrades.

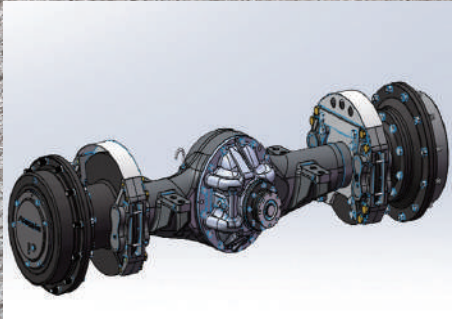


RELIABILITY REDefined: DURABLE COMPONENTS & DEVICE



Heavy-duty Axle

- The reinforced axle housing undergoes 20% thicker steel casting for extreme load resistance.
- Upgraded reducer bearings and robust construction for unmatched load capacity.
- Our heavy-duty axle housing passes 10,000-hour durability tests in quarry operations.



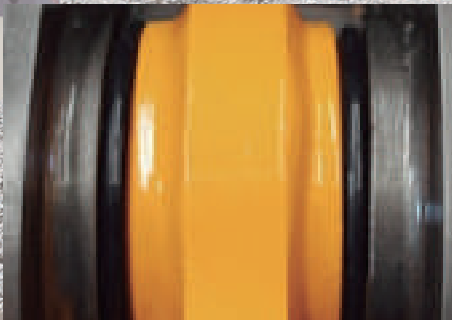
Enhanced Cooling Efficiency

- The perforated mesh rear window features a bent-edge design to prevent debris entry into the engine compartment.
- 60% increased frontal cooling area ensures sustained performance in high-temperature operating conditions.



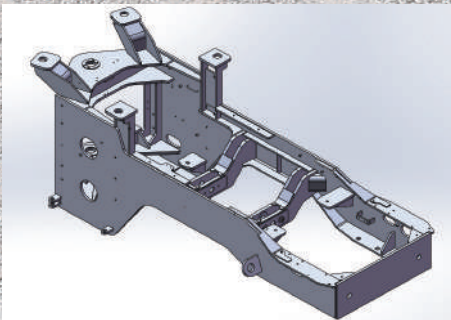
Double Sealing Linkage

- All hinged shaft holes adopt double sealing structure, which has good dustproof and sealing effect, fully guarantees internal lubrication and prolongs lubrication and aging for several thousand years.



Firm and Durable Structural Parts

- Finite Element Analysis (FEA) ensures superior strength and longevity.
- Reinforced framework for extended product life.



EVERY DETAIL FOR YOUR COMFORT: PREMIUM CABIN & INTELLIGENT CONTROL

New Generation Cabin

- Ergonomic Access Design
Threshold-free design ensures effortless operator access.
- Structural Rigidity Upgrade
Reinforced cabin frame and shock-absorbing enhances durability and comfort.
- Silent & Dust Tight Workspace
Advances sealing systems block dust and noise for undisturbed operation.



Suspension Seat with Seat Belt

- New Suspension Seat: Provides improved vibration damping and all-day comfort
- Standard 2" Retractable Seat Belt: Now included as default safety equipment (previously optional)



Integrated Control Panel

- Streamlined Interface: More integrated control layout.
- Dual USB Ports: Supports simultaneous device charging/connectivity.
- Added Wrist Rest: Comfortable arm positioning during operation.



Multi-Directional Air Vents

- Customizable vent directions allow personalized climate control.
- Improved air circulation throughout the cab, Reduced fatigue from uneven temperature distribution



Standard Rear View Camera

- Eliminates blind spots behind the machine.
- Provides clear view when reversing.
- Works in low-light/dusty conditions.



LED Work Lights

- 6 LED work lights: Energy efficient, high brightness LED work lights are equipped for superior illumination.



Standard Back Mirror

- Standard Back Mirror for Enhanced Safety and Visibility.
- Improved jobsite awareness and safety, reduced blind spots during operation.



Intelligent LCD Cluster

- All-new hydraulic LCD cluster, delivering enhanced functionality and operator centric visibility.
- Features Hyundai's new logo startup animation-enhancing both dashboard aesthetics and brand identity.



EASY ACCESS, FASTER MAINTENANCE



EVERY DETAIL FOR YOUR COMFORT: PREMIUM CABIN & INTELLIGENT CONTROL

Easy Access to Engine Compartment

Larger hood with two side wing flap opened door provide access for maintenance to easily replace engine components and perform daily maintenance.



Easy Maintenance Filter

High-efficiency filter system redefines maintenance convenience with quick access placement and filtration.



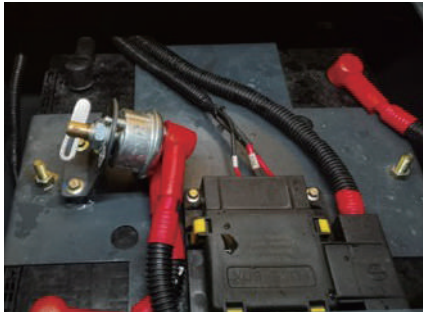
Oil Level Gauge

The hydraulic oil check sight gauge is installed on the side of the hydraulic tank for the convenience of maintenance check from ground level.



Battery Relay

Centralized Waterproof Fuse Box for Batteries - Simplifying Maintenance & Inspection.



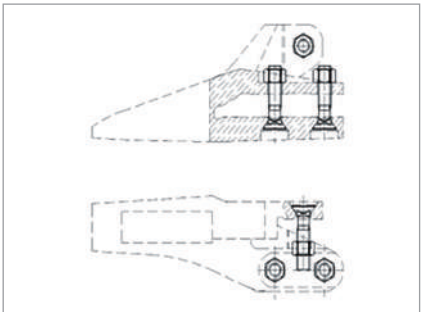
Easy Maintenance Brake System

The brake discs can be replaced quickly and easily without removing the tires, which saves maintenance time.



Enhanced Bucket Tooth Design

5mm increased thickness for 30% longer service life. Internal bolt/nut configuration eliminating external protrusions.



Non-Slip Platform

Non-slip platform and steps ensure operator's safety.



X SERIES WHEEL LOADER

SPECIFICATIONS

ENGINE		
Description	HL665XL	HL675XL
Maker	WEICHA	WEICHA
Model	WD10G220E21	WD10G240E21
Emission regulation	Tier II	Tier II
Power (Gross)	162kW(220HP)/2200rpm	175kW(240HP)/2200rpm
Power (Net)		
Max. torque	860N.m/(1400-1600)r/min	930N.m/(1300-1600)r/min
Displacement	9.726L	9.726L
No. of cylinders	6 EA	6 EA

TRANSMISSION		
Description	HL665XL	HL675XL
Transmission type	Parallel shaft power shift automatic transmission	Parallel shaft power shift automatic transmission
Transmission configuration	4F-4R	4F-4R
Torque converter	3 Elements single phase	3 Elements single phase
Tire	23.5-25-18 L3	23.5-25-20 L3
Travel speed (F1)	6	6
Travel speed (F2)	12	12
Travel speed (F3)	21	21
Travel speed (F4)	37	37
Travel speed (R1)	7	7
Travel speed (R2)	12	12

OVERVIEW		
Description	HL665XL	HL675XL
Operating weight	18,300	19,500
Bucket capacity(Heaped)	3.3	3.5
Bucket capacity (Struck)	/	/
Breakout force	17,000 kgf	17,800 kgf
Tipping load(Full turn)	11,100 kgf	12,100 kgf
Tipping load(Straight)	12,300 kgf	13,780 kgf

HYDRAULIC SYSTEM		
Description	HL665XL	HL675XL
Pump type	Fix gear pump	
Flow rate	220 lpm	220 LPM
System pressure	18 Mpa	19 Mpa
Cycle time (Lift with load)	5.1 sec	5 SEC
Cycle time (Dump with load)	1.1 sec	1.1 sec
Cycle time (Lower)	3.8 sec	3.4 sec
Cycle time (Total)	10 sec	9.5 sec

STEERING		
Description	HL665XL	HL675XL
Pump type	Fix gear pump	Fix gear pump
Flow rate	176 lpm	176 lpm
System pressure	16 Mpa	16 Mpa
Articulation angle	35°	

SERVICE REFILL CAPACITIES		
Description	HL665XL	HL675XL
Fuel tank (Refill)	280 L	280 L
Hydraulic tank	200 L	200 L
Hydraulic system (Including tank)	260 L	260 L
Coolant	50 L	50 L
Crank case	22 L	22 L
Transmission	54 L	54 L
Front axle	30 L	34 L
Rear axle	30 L	30 L

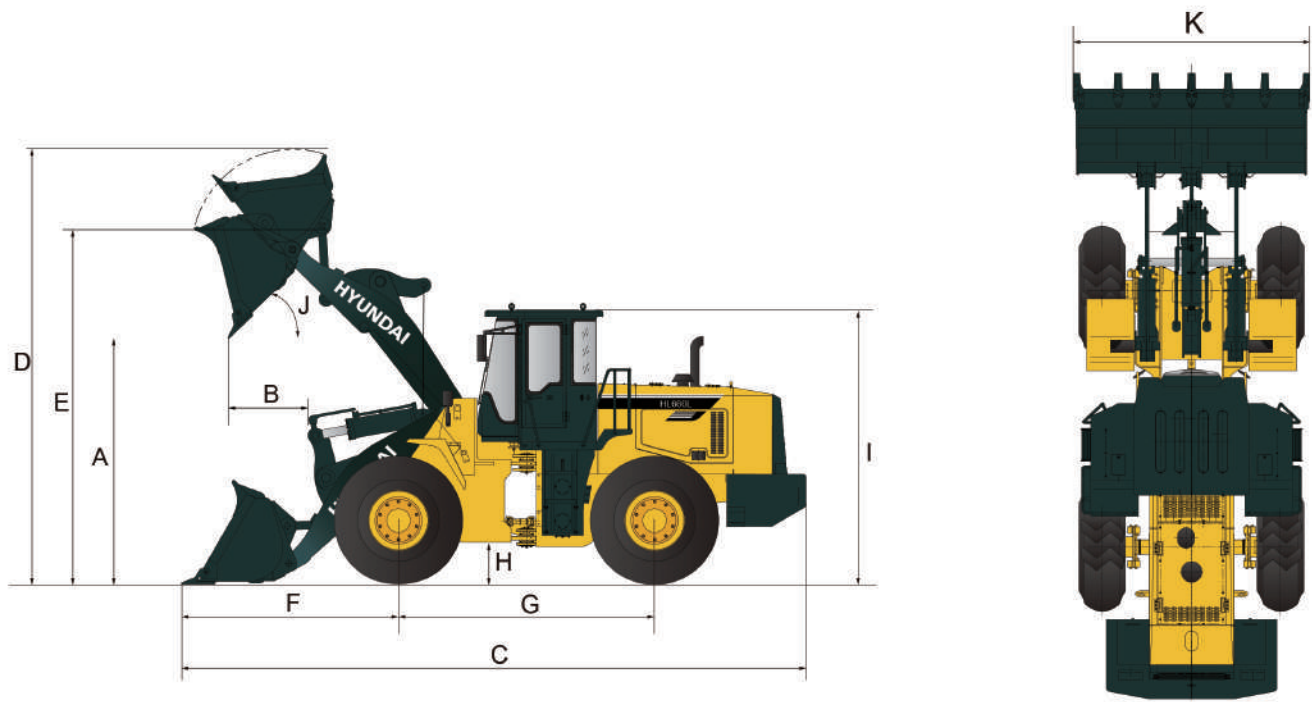
AXLES		
Description	HL665XL	HL675XL
Rear axle oscillation	± 10 °	

HL665XL

DIMENSIONS & WORKING RANGE

Dimensions

unit: mm



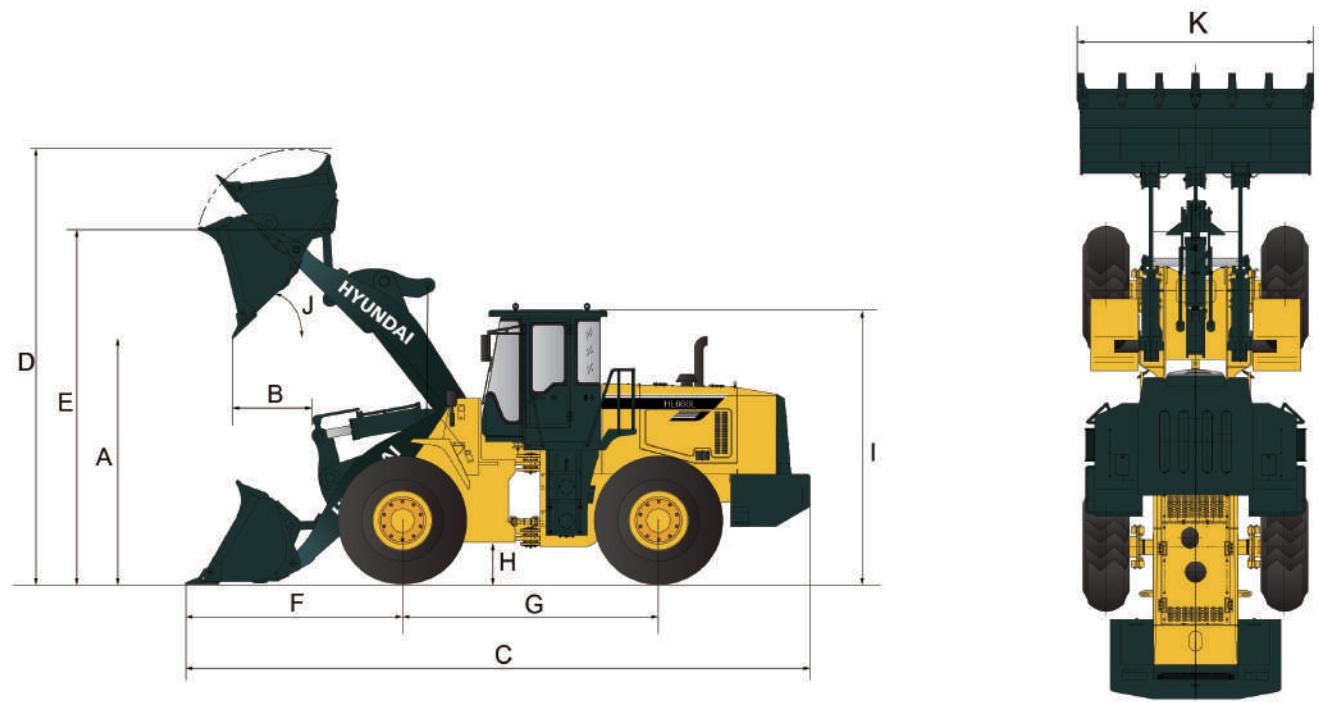
Item	Description	Standard	Longboom OPT
A	Dump clearance at 45° (Full lift)	3,100 mm	3,420 mm
B	Reach at 45° (Full lift)	1,220 mm	1,440 mm
C	Overall length (Ground)	8,200 mm	8,420 mm
	Overall length (Carry)	7,980 mm	8,180 mm
D	Overall height (Full raised)	5,175 mm	5,690 mm
E	Bucket pivot max. height	4,180 mm	4,410 mm
F	Front overhang	2,610 mm	2,830 mm
G	Wheel base	3,300 mm	3,300 mm
H	Ground clearance	400 mm	400 mm
I	Overall height (Cabin)	3,540 mm	3,540 mm
J	Dump angle	45 °	45 °
K	Overall width (with Bucket)	3,100 mm	3,100 mm
	Overall width (without Bucket)	2,850 mm	2,850 mm
	Rollback angle (Ground)	45 °	45 °
	Rollback angle (Carry)	48 °	54 °
	Clearance circle (Bucket)	14,630 mm	14,775 mm
	Turning radius (Center of outside tire)	6,390 mm	6,390 mm

HL675XL

DIMENSIONS & WORKING RANGE

Dimensions

unit: mm



Item	Description	Standard	Longboom OPT
A	Dump clearance at 45° (Full lift)	3,200 mm	3,428 mm
B	Reach at 45° (Full lift)	1,150 mm	1,140 mm
C	Overall length (Ground)	8,280 mm	8,490 mm
	Overall length (Carry)	8,200 mm	8,466 mm
D	Overall height (Full raised)	5,420 mm	5,954 mm
E	Bucket pivot max. height	4,330 mm	4,657 mm
F	Front overhang	2,844 mm	3,037 mm
G	Wheel base	3,300 mm	3,300 mm
H	Ground clearance	402 mm	402 mm
I	Overall height (Cabin)	3,540 mm	3,540 mm
J	Dump angle	45 °	45 °
K	Overall width (with Bucket)	3,005 mm	3,005 mm
	Overall width (without Bucket)	2,900 mm	2,900 mm
	Rollback angle (Ground)	42 °	43 °
	Rollback angle (Carry)	48 °	46 °
	Clearance circle (Bucket)	13,770 mm	14,020 mm
	Turning radius (Center of outside tire)	6,267 mm	6,267 mm