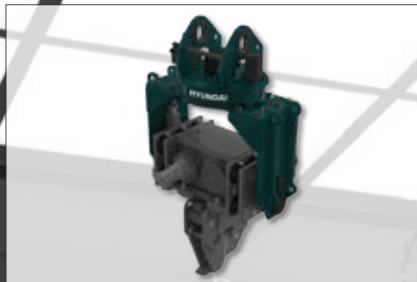


HYUNDAI ATTACHMENTS



C O N T E N T S

Overview

Product Line up

- Breaker
 - HEB Series
 - HTB Series
 - HRB Series
- Multiprocessor
- Pulverizer
- Grab
- Compactor
- Vibro Attachment
 - Vibro Hammer
 - Vibro Ripper

Breaker



Model

	Standard	Premium
Mini Size	HEB010	HEB010P
	HEB020	HEB020P
	HEB030	HEB030P
	HEB040	HEB040P
Small Size	HEB050	HEB050P
	HEB060	HEB060P
	HEB100	HEB100P
Medium Size	HEB140S	HEB140P
	HEB220S	HEB220P
Large Size	HEB310	HEB310P
	HEB400	HEB400P
	HEB500	HEB500P
Super Size		HEB700P

Multiprocessor



Model
HEM130 HEM220
HEM320 HEM400



Pulverizer



Model
Fixed Type
HEP080 HEP220
HEP160 HEP320
HEP190 HEP420
Rotatable Type
HEP160R HEP350R
HEP200R HEP450R
HEP250R

Compactor



Model
HEC050N HEC100 HEC150
HEC200 HEC300

Grab



Model
HEG030 HEG050 HEG080
HEG140 HEG200 HEG300

Vibro Ripper



Model
HSR250
HSR300
HSR400
HSR500
HSR800

Vibro Hammer



Standard
HSH250
HSH300
HSH400



Auto tilting
HSH250T
HSH300T
HSH400T



Side grip
HSH250SG
HSH300SG



BREAKERS

HEB SERIES

Maximizing productivity and reliability

Minimizing maintenance and downtime

Right tools for all carriers and applications



Consider AEM's tool energy rating

Why develop the tool energy rating

Assessing and comparing hydraulic breakers have never been easier or more accurate than the tool energy developed by the mounted breaker manufacture bureau(MBMB) of the AEM which is U.S based international trade group serving the business needs of construction equipment manufacturers and construction services providers. The AEM tool energy rating is accepted by hydraulic breaker manufacturers from Finland, France, Germany, Italy, Japan, Korea, Sweden and the United States. HYUNDAI CORE MOTION has been accredited to self-certify the tool energy rating obtained through test processes complying with "AEM Measuring Guide."

High impact energy by AEM tool energy rating

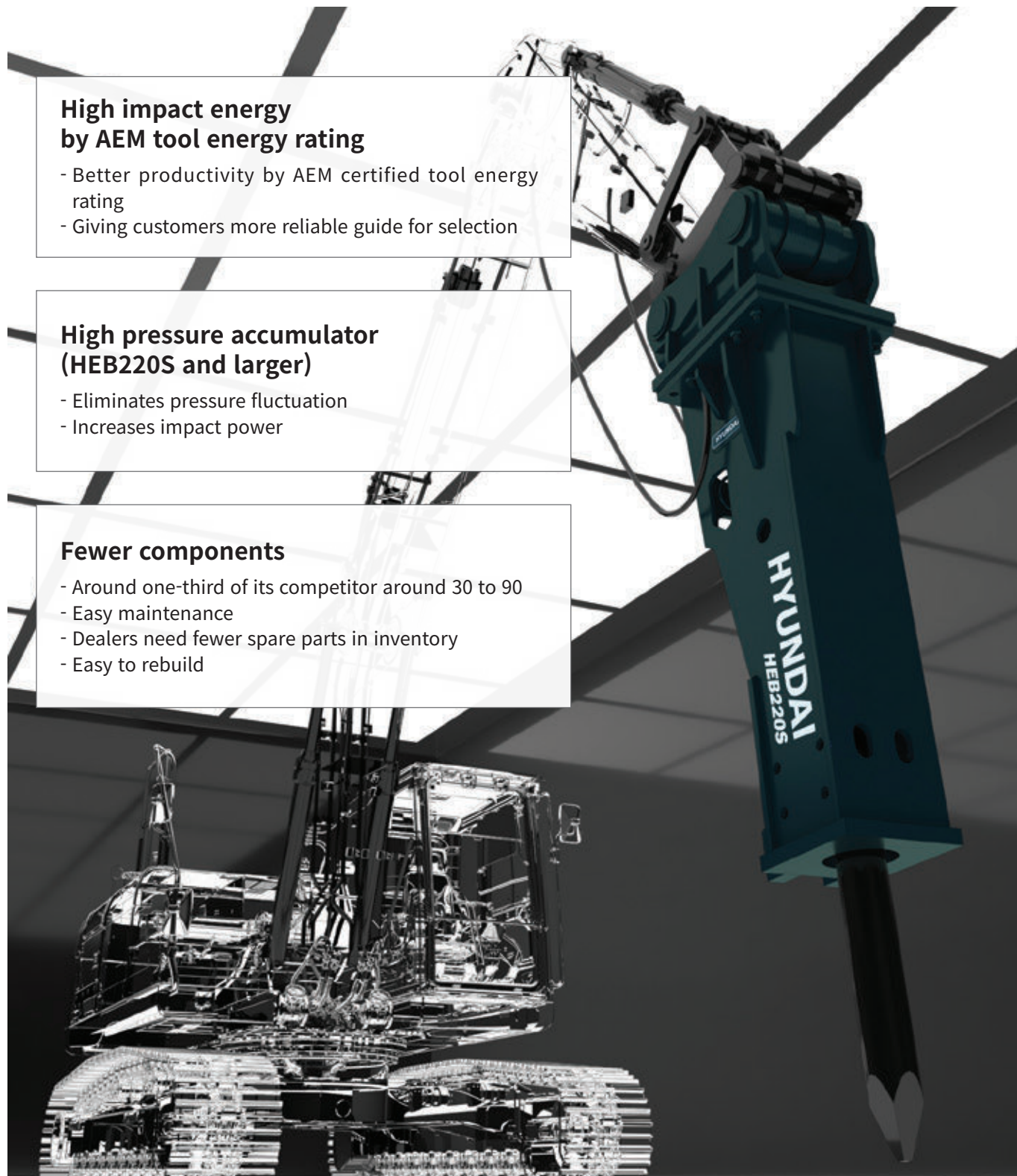
- Better productivity by AEM certified tool energy rating
- Giving customers more reliable guide for selection

High pressure accumulator (HEB220S and larger)

- Eliminates pressure fluctuation
- Increases impact power

Fewer components

- Around one-third of its competitor around 30 to 90
- Easy maintenance
- Dealers need fewer spare parts in inventory
- Easy to rebuild



ADVANCED TECHNOLOGY

Through bolt

- Reduces internal torsion stress to increase faster life

Full box enclosure

- No rigid side bolts
- Low maintenance cost
- Extremely durable welded structure
- Reduces noise
- Hammer is completely protected and quieter
- Perfect sealed enclosure by dust Protector & Seal plugs (premium series only)

Wide and light-weight cover

- Noise insulation
- Dust protection, Easy maintenance

Easy maintenance

- Fewer components
- Wide and appropriate opening

High quality working tool

- Optimized by high grade steel and heat treatment

Perfect cushion damper

- Optimal damping system made of high quality elastomer
- Minimizing recoil shock induced by impact
- Reduces noise and vibration

Unique valve design

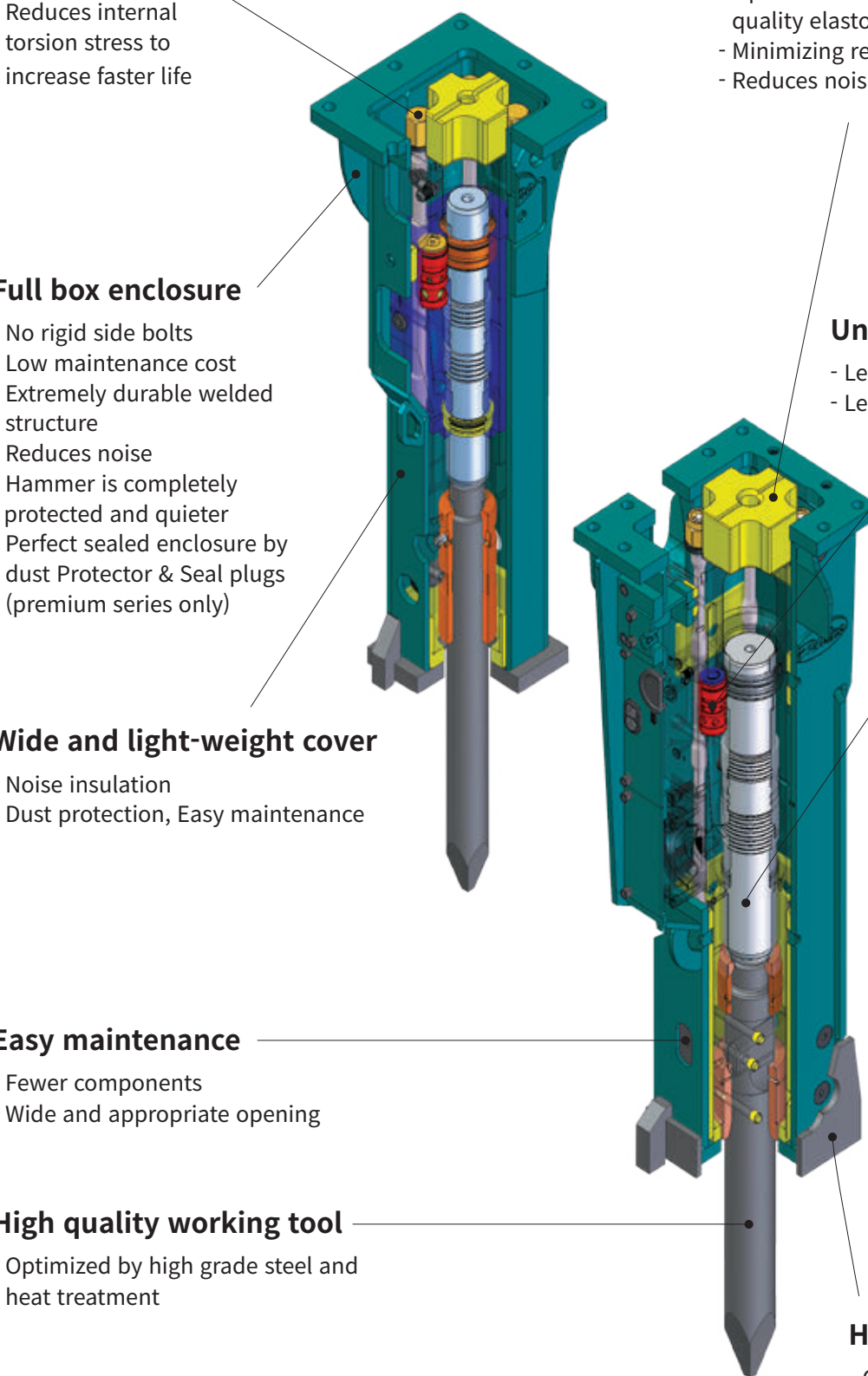
- Lessens pressure fluctuation
- Less damage on carrier's pump

Long piston stroke

- Maximizes impact energy
- Minimizes recoil
- Eliminates mechanical springs
- Special heat-treated and hardened piston

Hardened rock dragger

- Optimized by high grade steel and heat treatment



BOX HOUSING TYPE

Prime series are silenced type breakers that are developed for environment and human health according to international trend of noise restriction.

By wearing a hard boots of reinforced rock dragger and bracket, prime series provides much innovative durability with maximum power than ever. The benefits of these series are dual speed control system, hard boots(HEB140S and larger), anti-blank firing function, auto stop & auto start and single high pressure accumulator(HEB220S and larger)



• APPLICATION

Contents	HEB010/P		HEB020/P		HEB030/P		HEB040/P		HEB050/P		HEB060/P		HEB100/P		HEB140S	HEB140P	HEB220S	HEB220P	HEB310/P		HEB400/P		HEB500/P		HEB700P
Grade	S	P	S	P	S	P	S	P	S	P	S	P	S	P	S	P	S	P	S	P	S	P	S	P	P
Accumulator(o,x)	x		x		x		x		x		x		x		x		o		o		o		o		o
Dual speed control(o,x)	x		x		x		x		x		x		x		x		o		o		o		o		o
Anti-blank firing func.(o,x)	x		x		x		x		x		x		x		x		o		o		o		o		o
Under water(o,x)	x		x		x		x		x		x		x		x		o		o		o		o		o
Auto greasing kit (o,x)	x		x		x		x		x		x		x		x		△		△		△		△		△

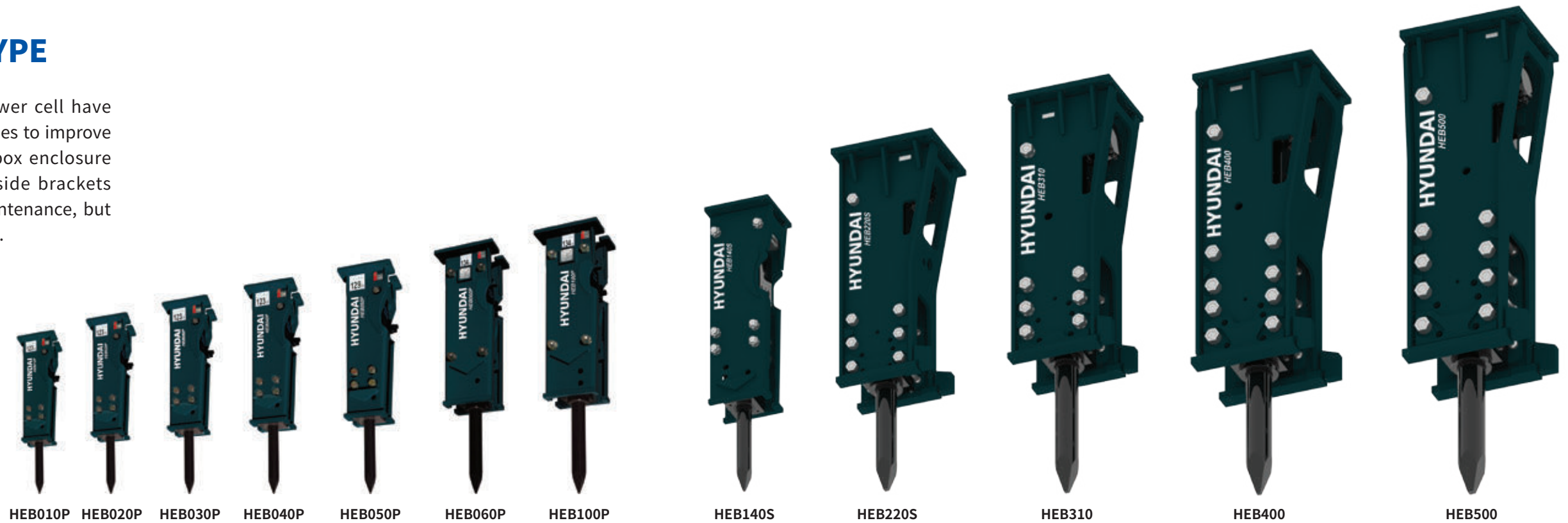
• SPECIFICATION

Specification		Unit	Grade	HEB010/P	HEB020/P	HEB030/P	HEB040/P	HEB050/P	HEB060/P	HEB100/P	HEB140S/P	HEB220S/P	HEB310/P	HEB400/P	HEB500/P	HEB700P	
Working weight		kg	S	106	106	129	161	299	370	504	691	1,530	2,109	2,843	3,598		
			P	116	116	144	243	314	468	552	1,148	1,799	2,461	3,433	4,119	6,484	
Overall length		mm	S	1,172	1,172	1,260	1,289	1,630	1,865	1,983	2,267	2,796	3,246	3,379	3,705		
			P	1,215	1,215	1,257	1,403	1,682	1,933	2,066	2,375	2,935	3,281	3,531	3,735	4,236	
Oil flow		lpm	S	15 ~ 25	20 ~ 35	25 ~ 35	30 ~ 50	35 ~ 65	45 ~ 90	60 ~ 110	80 ~ 140	130 ~ 180	170 ~ 240	200 ~ 280	230 ~ 330		
			P	15 ~ 25	20 ~ 35	25 ~ 35	30 ~ 50	35 ~ 65	45 ~ 90	60 ~ 110	80 ~ 140	130 ~ 180	170 ~ 240	200 ~ 280	230 ~ 330	320 ~ 420	
Operating pressure		bar	S	90 ~ 110	70 ~ 100	90 ~ 110	110 ~ 140	140 ~ 170	140 ~ 170	150 ~ 170	160 ~ 180	150 ~ 180	150 ~ 185	160 ~ 185	165 ~ 185		
			P	100 ~ 130	100 ~ 130	100 ~ 130	110 ~ 140	130 ~ 170	130 ~ 170	140 ~ 180	140 ~ 180	160 ~ 180	165 ~ 185	165 ~ 185	165 ~ 185	165 ~ 185	
Impact rate		low speed	bpm	S								350 ~ 500	310 ~ 450	300 ~ 410	250 ~ 370		
				P								380 ~ 700	330 ~ 500	310 ~ 490	330 ~ 450	250 ~ 370	280 ~ 370
		high speed	bpm	S	600 ~ 1,200	700 ~ 1,200	550 ~ 1,000	600 ~ 1,000	450 ~ 950	500 ~ 900	400 ~ 850	450 ~ 750	450 ~ 600	400 ~ 560	380 ~ 540	300 ~ 420	
				P	700 ~ 1,200	700 ~ 1,200	550 ~ 1,000	600 ~ 1,000	550 ~ 1,000	520 ~ 1,000	500 ~ 1,000	550 ~ 850	430 ~ 650	400 ~ 680	420 ~ 600	350 ~ 500	370 ~ 480
Chisel diameter		mm	S	45	45	50	55	68	75	93	98	135	150	165	175		
			P	45	45	50	58	68	80	93	105	135	150	165	180	205	
Applicable Carrier Range		ton	All	0.7 ~ 2.5	1.0 ~ 4.0	1.5 ~ 4.5	2.5 ~ 6.0	3.5 ~ 8.0	5.0 ~ 11.0	7.0 ~ 15.0	12 ~ 20	20 ~ 30	26 ~ 35	32 ~ 45	40 ~ 70	60 ~ 110	
(Optimal ragne)				0.7 ~ 1.2	1.0 ~ 2.5	1.5 ~ 3.0	2.5 ~ 4.5	4.0 ~ 6.0	6.0 ~ 8.0	8.0 ~ 12.0	12 ~ 16/12 ~ 18	20 ~ 26	26 ~ 32	32 ~ 40	40 ~ 60	65 ~ 85	

※ Specifications above are subject to change without notice for quality improvement.

OPEN HOUSING TYPE

The new design and color of power cell have been adapted for this standard series to improve protection of power cell in non-box enclosure breaker. Round open and long side brackets offer not only access for easy maintenance, but also better protection of power cell.



- **APPLICATION**

○ : Standard, △ : Option, × : N/A

Contents	HEB010/P		HEB020/P		HEB030/P		HEB040/P		HEB050/P		HEB060/P		HEB100/P		HEB140S	HEB220S	HEB310	HEB400	HEB500
Grade	S	P	S	P	S	P	S	P	S	P	S	P	S	P	S	S	S	S	S
Accumulator	x		x		x		x		x		x		x		x	o	o	o	o
Dual speed control	x		x		x		x		x		x		x		x	o	o	o	o
Anti-blank firing func.	x		x		x		x		x		x		x		x	o	o	o	o
Under water	x		x		x		x		x		x		x		x	o	o	o	o
Auto greasing kit	x		x		x		x		x		x		x		x	△	△	△	△

- **SPECIFICATION**

Specification		Unit	Grade	HEB010/P	HEB020/P	HEB030/P	HEB040/P	HEB050/P	HEB060/P	HEB100/P	HEB140S	HEB220S	HEB310	HEB400	HEB500	
Working weight		kg	S	109	109	131	167	299	371	497	725	1,573	2,193	3,109	3,811	
			P	116	116	142	211	330	455	549						
Overall length		mm	S	1,181	1,181	1,270	1,316	1,635	1,850	1,985	2,270	2,829	3,285	3,430	3,749	
			P	1,207	1,207	1,242	1,390	1,674	1,916	2,049						
Oil flow		lpm	S	15 ~ 25	20 ~ 35	25 ~ 35	30 ~ 50	35 ~ 65	45 ~ 90	60 ~ 110	80 ~ 140	130 ~ 180	170 ~ 240	200 ~ 280	230 ~ 330	
			P	15 ~ 25	20 ~ 35	25 ~ 35	30 ~ 50	35 ~ 65	45 ~ 90	60 ~ 110						
Operating pressure		bar	S	90 ~ 110	70 ~ 100	90 ~ 110	110 ~ 140	140 ~ 170	140 ~ 170	150 ~ 170	160 ~ 180	150 ~ 180	150 ~ 185	160 ~ 185	165 ~ 185	
			P	100 ~ 130	100 ~ 130	100 ~ 130	110 ~ 140	130 ~ 170	130 ~ 170	170 ~ 180						
Impact rate		low	bpm	S								350 ~ 500	310 ~ 450	300 ~ 410	250 ~ 370	
		speed		P												
		high		S	600 ~ 1,200	700 ~ 1,200	550 ~ 1,000	600 ~ 1,000	450 ~ 950	500 ~ 900	400 ~ 850	450 ~ 750	450 ~ 600	400 ~ 560	380 ~ 540	300 ~ 420
		speed		P	700 ~ 1,200	700 ~ 1,200	550 ~ 1,000	550 ~ 1,000	550 ~ 1,000	520 ~ 1,000	500 ~ 1,000					
Chisel diameter		mm	S	45	45	50	55	68	75	93	98	135	150	165	175	
			P	45	45	50	58	68	80	93						
Applicable Carrier Range		ton	All	0.7 ~ 2.5	1.0 ~ 4.0	1.5 ~ 4.5	2.5 ~ 6.0	3.5 ~ 8.0	5.0 ~ 11.0	7.0 ~ 15.0	12 ~ 20	20 ~ 30	26 ~ 35	32 ~ 45	40 ~ 70	
(Optimal ragne)				0.7 ~ 1.2	1.0 ~ 2.5	2.5 ~ 4.5	2.5 ~ 4.5	4.0 ~ 6.0	6.0 ~ 8.0	8.0 ~ 12.0	12 ~ 16	20 ~ 26	26 ~ 32	32 ~ 40	40 ~ 60	

※ Specifications above are subject to change without notice for quality improvement.

SKIDSTEER LOADER

Skidsteer Loader series are developed for Skidsteer loader to meet the market requirement of higher impact energy and optimal performance.



BACKHOE LOADER

Backhoe Loader series are developed for Backhoe loader to meet the required design for transportation.



• SPECIFICATION

Specification		Unit	Grade	HEB040SL/PSL	HEB050BL/PBL	HEB060BL/PBL
Working weight		kg	S	276	278	352
			P	255	312	400
Overall length		mm	S	1,285	1,597	1,728
			P	1,352	1,585	1,767
Oil flow		lpm	S	50 ~ 75	35 ~ 65	45 ~ 90
			P	50 ~ 75	35 ~ 65	45 ~ 90
Operating pressure		bar	S	110 ~ 140	140 ~ 170	140 ~ 170
			P	110 ~ 140	130 ~ 170	130 ~ 170
Impact rate	low speed	bpm	S			-
			P			
	high speed		S	550 ~ 1,000	450 ~ 950	500 ~ 900
			P	550 ~ 1,000	550 ~ 1,000	520 ~ 1,000
Chisel diameter		mm	S	55	68	75
			P	58	68	80
Applicable Carrier Range		ton	All	2.5 ~ 8.0	3.5 ~ 8.0	5.0 ~ 11.0
(Optimal ragne)				4.0 ~ 6.0	4.0 ~ 6.0	6.0 ~ 8.0

※ Specifications above are subject to change without notice for quality improvement.



Features and benefits

Proven Working Principle (oil and gas assist)

- Pressurized nitrogen gas is the main power source, to operate with less demand on the carrier's hydraulic system.

Fewer Components

- Around one-third as its competitor, around 30 to 90 items depending on model
- Easy maintenance
- Dealers need fewer spare parts in inventory
- Easy to rebuild

Dual speed Control

- Control blow frequency according to hardness of rock

Anti-blank firing function

- Significantly reduces blank blow induced failures (HEB220S and larger)

Underwater application

- Allowing hammer submerged in water (HEB140P and larger)

Option

- Auto dispense of lubricating paste, each time hammer is operating

Swivel Joint

- Reduces vibration induced hose failure.

Centralized Lubricating system

- Enable to utilize centralized auto grease system

Increased life time of dampers and wear plates

- This gives longer maintenance interval.

Rugged Construction

- Jigsaw shaped main bracket design achieves better resilience from external force. This ensure sound and long lasting body structure.

BREAKER SELECTION GUIDE

Breaker Selection Guide

(applicable carrier range and minimum required hydraulic power)

Model		Weight of carrier in tonnes (t)																																Hydraulic power of carrier			
		Weight of carrier in kilopounds (klbs)																																Minimum Oil Flow		Minimum Pressure	
																																		lpm	gpm	bar	psi
Mini Size	HEB010P	<div><div>0.71.22.5</div><div>1.572.65.5</div></div>																																15	(4.0)	160	(2,300)
	HEB020P	<div><div>1.02.54.0</div><div>2.25.58.8</div></div>																																20	(5.3)	180	(2,600)
	HEB030P	<div><div>1.53.04.5</div><div>3.36.69.9</div></div>																																25	(6.6)	180	(2,600)
	HEB040P	<div><div>2.54.56.0</div><div>5.59.913.2</div></div>																																30	(7.9)	180	(2,600)
Small Size	HEB050P	<div><div>3.54.068</div><div>7.78.81318</div></div>																																35	(9.2)	200	(2,900)
	HEB060P	<div><div>56811</div><div>11131824</div></div>																																45	(12)	210	(3,000)
	HEB100P	<div><div>781215</div><div>15182633</div></div>																																60	(16)	210	(3,000)
Medium Size	HEB140P	<div><div>121820</div><div>264044</div></div>																																80	(21)	220	(3,200)
	HEB220P	<div><div>202630</div><div>445766</div></div>																																130	(34)	220	(3,200)
Large Size	HEB310P	<div><div>263235</div><div>577177</div></div>																																170	(45)	230	(3,300)
	HEB400P	<div><div>324045</div><div>718899</div></div>																																200	(53)	230	(3,300)
	HEB500P	<div><div>406070</div><div>88132154</div></div>																																230	(61)	230	(3,300)
Super Size	HEB700P	<div><div>606585110</div><div>132143187242</div></div>																																320	(85)	230	(3,300)

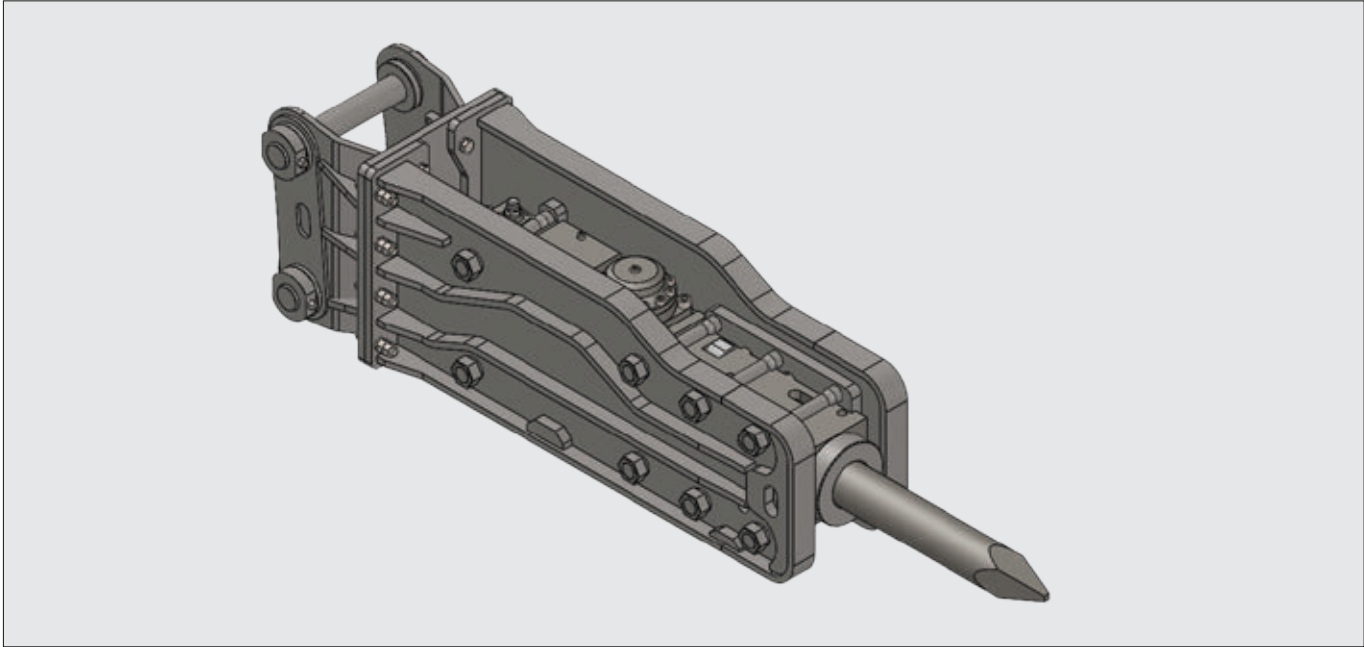
This guide is valid for the normal excavators equipped with standard boom-arm.



BREAKERS

HTB SERIES

HTB Series



• SPECIFICATION

Specification		Unit	HTB220
Operating Weight	Total Ass'y	kg	2,010
	w/o Chisel	mm	1,890
Overall Length (L)	Total Ass'y	mm	2,880
	w/o Chisel	mm	2,060
Overall Height (H)	Total Ass'y	mm	680
Overall Width (W)	Total Ass'y	mm	575
Standard Tool (Moil)	Diameter	mm	Ø135
	Length	mm	1,200
Operating Pressure		kgf/cm2	170 ~ 210
Required Oil Flow		L/min.	130 ~ 150
Blow Frequency	Low Speed	bpm	400
	High Speed		800
Acceptable Back Pressure (Max.)		kgf/cm2	6.3 ~ 7
Relief Setting Pressure		kgf/cm2	210
Pressure Adjust Valve Setting (Close → Open)		turns	2
Gas Charging Pressure	Back Head	kgf/cm2	6.5
	Accumulator	kgf/cm2	55 ~ 60
Connecting Hose	Length	mm	2,500
	Inner Size	in.	1"
	Fitting Size	-	ORF 1-7/16"*12UNF-SP
Applicable Carrier Range		ton	18 ~ 25

※ Specifications above are subject to change without notice for quality improvement.

• Easy maintenance

• Cooling efficiency

The valve is separately mounted on the outside of the cylinder for good cooling efficiency.



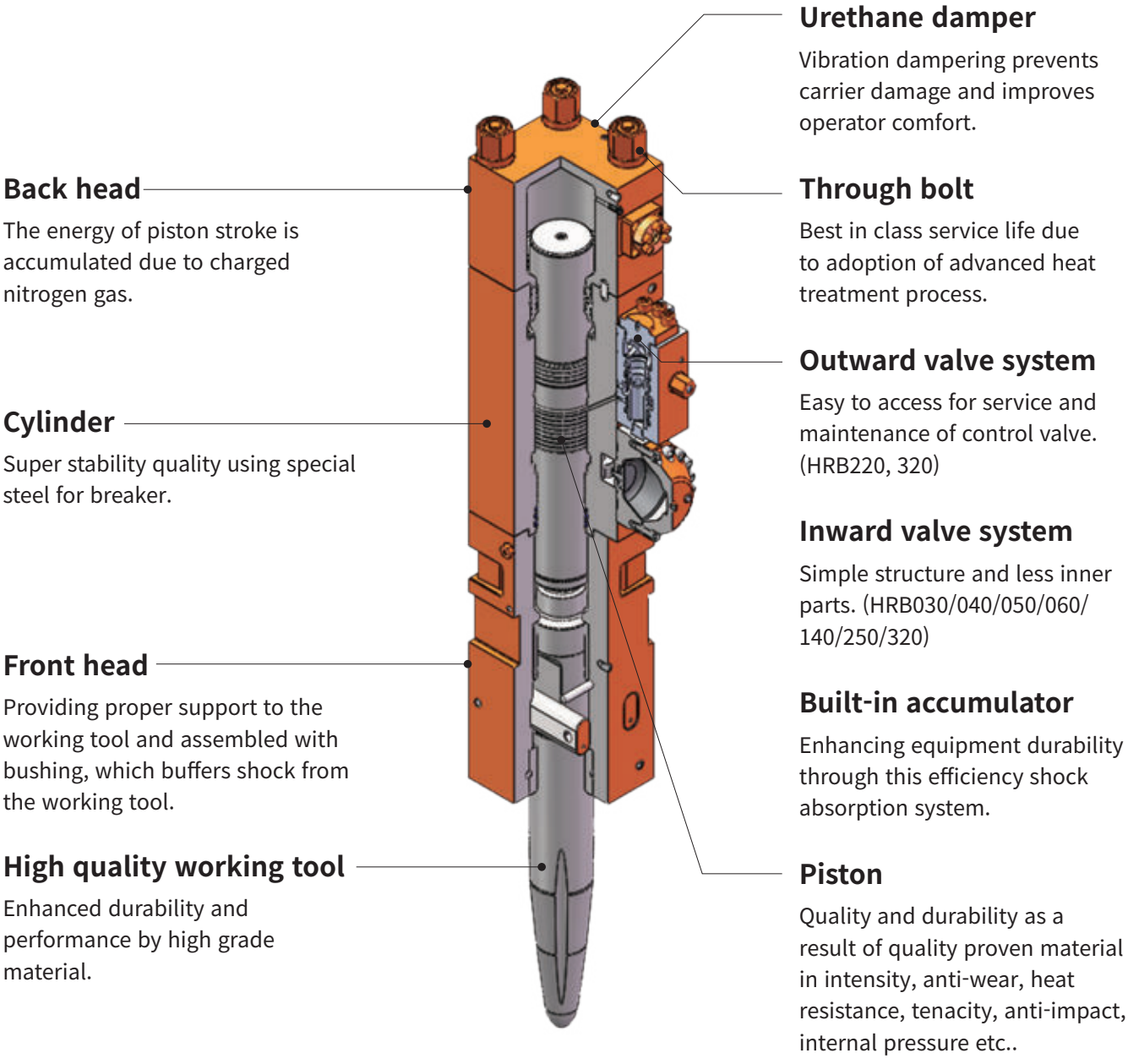
BREAKERS

HRB SERIES

Excellent Performance
Enhanced Durability
Customer Convenience
Easy Maintenance







TECHNOLOGY



TOOL SELECTION

USE THE RIGHT TOOL FOR THE RIGHT JOB

Working tool is a wear part and tool consumption is the main causative for wear part costs. It's important to select an appropriate tool according to the working condition.

	Moil Point (Conical) Demolition Hard Ground Hard Ground with Failures Concrete		Moil Wedge (Pyramidal) Trenching General Excavation Asphalt Mass Excavation in Quarry Soft Ground with Faults Concrete Reinforced Concrete		Flat Wedge Trenching General Excavation Mass Excavation in Quarry Soft Ground with Faults Concrete Reinforced Concrete		Flat End (Blunt) Block Splitting Compact Abrasive Difficult to Position Concrete Slab on Demolition
---	---	---	--	---	---	---	--

Type of HRB Breakers



BOX HOUSING TYPE

Recommended for professional contractors working in urban zones, where noise level must be controlled and/or where local regulation may require silenced breakers.

- Silenced design
- Less vibration due to urethane damper inside



OPEN HOUSING TYPE

Simplified design, offer easy access to the power cell for easy on-site maintenance.

- Simple design
- Easy on-site maintenance
- More reach than side mounting



SIDE MOUNT TYPE

Similar characteristics as the open housing type, the mounting on the arm of the excavator is made at an angle.

- Simple design
- Easy on-site maintenance
- Convenience to carry on with excavator



HRB SERIES



• APPLICATION ○ : Standard, △ : Option, × : N/A

Contents	HRB030	HRB040	HRB050	HRB060	HRB140	HRB220	HRB250	HRB310	HRB320
Accumulator	×	×	×	×	×	○	○	○	○
Dual speed control	×	×	×	×	×	×	×	×	×
Anti-blank firing func.	×	×	×	×	×	×	×	×	×
Under water	×	×	×	×	×	×	×	×	×
Auto greasing kit	×	×	×	×	×	△	△	△	△

• SPECIFICATION

Specification		Unit	HRB030			HRB040			HRB050			HRB060			HRB140			HRB220			HRB250			HRB310			HRB320		
			Box Housing	Open Housing	Side Mount	Box Housing	Open Housing	Side Mount	Box Housing	Open Housing	Side Mount	Box Housing	Open Housing	Side Mount	Box Housing	Open Housing	Side Mount	Box Housing	Open Housing	Side Mount	Box Housing	Open Housing	Side Mount	Box Housing	Open Housing	Side Mount	Box Housing	Open Housing	Side Mount
Working weight		kg	129	95	95	180	158	158	361	343	263	451	410	335	1,007	866	761	1,893	1,847	1,653	2,046	2,094	1,809	2,457	2,380	2,218	2,968	2,745	2,577
Overall length		mm	1,331	1,235	1,090	1,417	1,344	1,178	1,660	1,684	1,373	1,717	1,738	1,630	2,354	2,387	1,994	2,847	2,900	2,423	2,793	2,866	2,480	3,002	2,897	2,640	3,075	3,102	2,776
Oil flow		lpm	20 ~ 30			25 ~ 50			40 ~ 70			50 ~ 90			80 ~ 110			130 ~ 150			120 ~ 180			150 ~ 190			180 ~ 240		
Operating pressure		bar	88 ~ 117			88 ~ 117			108 ~ 137			118 ~ 147			147 ~ 166			157 ~ 177			157 ~ 177			157 ~ 177			157 ~ 177		
Impact rate	low speed	bpm	-			-			-			-			-			-			-			-			-		
	high speed		700 ~ 1,200			600 ~ 1,100			500 ~ 900			400 ~ 800			350 ~ 700			400 ~ 600			350 ~ 550			350 ~ 700			300 ~ 450		
Chisel diameter		mm	45			53			68			75			100			135			140			150			155		
Applicable Carrier Range		ton	1.2 ~ 3.0			2.5 ~ 4.5			4.0 ~ 7.0			6.0 ~ 9.0			10 ~ 15			18 ~ 26			18 ~ 26			27 ~ 35			28 ~ 35		

※ Specifications above are subject to change without notice for quality improvement.

MULTIPROCESSOR

Multiprocessor for professional demolition

Multiprocessor series are featured interchangeable jaw sets mounted on a single base unit providing the efficiency of four tools in one.



MULTIPROCESSOR



Unlimited 360° Hydraulic rotation
With heavy-duty swing gear



Speed up valve
High jaw opening & closing speed



Customized tooth type
Welding type or replaceable type can be chosen



One pin type jaw mechanism
for enhanced shearing force and working & maintenance efficiency



Fully reversible rectangular blades
for lower maintenance cost



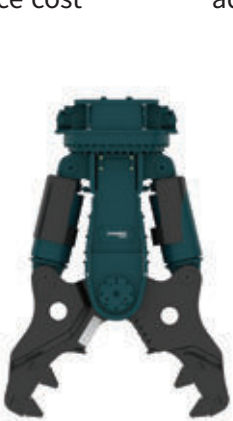
User friendly blade clearance
Adjustment by using one set of adjust nut



HEM130



HEM220



HEM320



HEM400

• SPECIFICATION

Specification		Unit	HEM130				HEM220				HEM320				HEM400			
Jaw Type			Crushing	Demolition	Pulverizing	Shear	Crushing	Demolition	Pulverizing	Shear	Crushing	Demolition	Pulverizing	Shear	Crushing	Demolition	Pulverizing	Shear
Working weight		kg	1,231	1,330	1,351	1,256	2,166	2,126	2,233	2,034	3,032	3,012	3,078	2,947	4,694	4,635	4,781	4,575
Overall length		mm	1,940	1,945	1,972	1,890	2,326	2,291	2,342	2,175	2,533	2,565	2,563	2,553	2,807	3,063	2,971	2,968
Overall width		mm	1,200	1,187	1,157	989	1,438	1,368	1,508	1,083	1,684	1,560	1,643	1,348	1,970	1,879	1,895	1,612
Max. Jaw opening		mm	643	629	647	360	903	797	893	503	1,119	983	1,008	573	1,274	1,209	1,184	676
Cutter blade length		mm	214	214	219	319	237	355	237	348	240	461	240	566	264	507	264	631
Required oil flow		lpm	100 ~ 180				150 ~ 250				200 ~ 300				280 ~ 360			
Max. Operating pressure		bar	350				350				350				350			
Crushing force(tip)		ton	62	62	64	65	74	77	70	88	104	110	113	114	159	158	166	178
Applicable Carrier Range		ton	14 ~ 19				20 ~ 28				28 ~ 36				36 ~ 47			
Standard features	Hyd. Slewing motor		Standard				Standard				Standard				Standard			
	Speed-up valve		Standard				Standard				Standard				Standard			

※ Specifications above are subject to change without notice for quality improvement.

• JAW TYPE



Crushing Jaw set

For the primary demolition operations. Crushing down the main structure of a building.

Demolition Jaw set

Specially designed and engineered for mixed concrete and steel applications, combining the advantages of shear jaw set and concrete jaw set. Processing heavily reinforced concrete structures and concrete encased I-beam steel barrels without jaw change.

Pulverizing Jaw set

For the secondary demolition operations. Starting to process the demolished materials. for example Separating reinforcing bar from concrete.

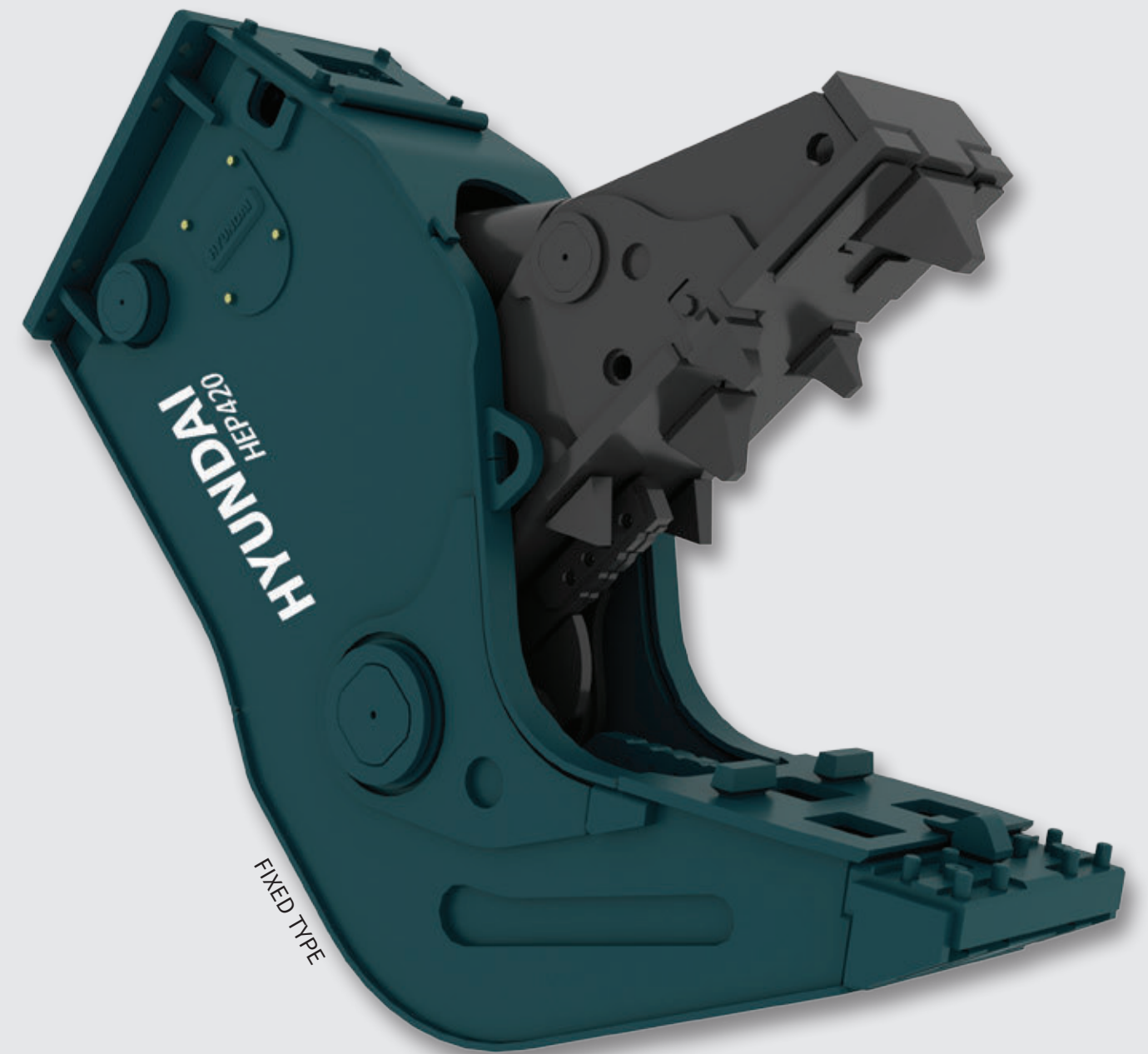
Shear Jaw set

The shear jaw set can be used on all industrial demolition sites for cutting materials such as section bars, pipes, tanks railway carriages, etc..

PULVERIZER

Produced with increased power and durability

Pulverizer series are designed for both primary demolition work, secondary concrete reduction and material sorting.



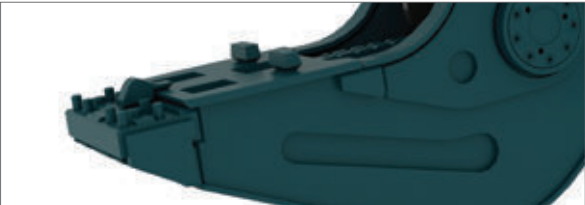
PULVERIZER - Fixed type



Cracking tooth
On the outer end of jaw for high productivity during pulverizing job



Integrated speed-up valve
delivering easy maintenance and roomy space



Hardened teeth
made of special materials for enhanced durability



Tooth bolting style
for quick and effective replacement (welding type is also available)



Fully reversible rectangular blades
for lower maintenance cost



Wider jaw
With its wider jaw, exceptional closing force and short cycle times, Pulverizer series provide excellent productivity in concrete reduction and reinforced steel separation.

Integrated speed-up valve with cylinder
Maximum maintenance efficiency

Replaceable tooth system
Fast and effortless replacement of tooth allowing high productivity.

Durability
Increased durability has been achieved with the use of abrasive-resistant material. Powerful and durable attachments produced by advanced design and high quality production are able to handle the toughest jobs.

• SPECIFICATION

Specification		Unit	HEP080	HEP160	HEP190	HEP220	HEP320	HEP420
Working weight		kg	518	952	1310	1,930	2,349	3,321
Overall length		mm	1,275	1,656	1,985	2,435	2,074	2,633
Jaw width(Fixed/Moving Jaw)		mm	340 / 290	384 / 330	438 / 350	470 / 376	510 / 392	550 / 428
Max. Jaw opening		mm	478	680	732	968	970	1,105
Max. Operating pressure		bar	300	350	350	350	350	350
Crushing force(tip)		ton	39	56	59	77	84	116
Cutter blade length		mm	110	240	240	360	360	240
Required oil flow		lpm	80 ~ 100	100 ~ 180	150 ~ 250	150 ~ 250	200 ~ 300	200 ~ 300
Applicable Carrier Range		ton	7 ~ 10	13 ~ 20	16 ~ 25	20 ~ 28	28 ~ 36	36 ~ 44
Standard features	Speed-up valve		Not available	Not available	Standard	Standard	Standard	Standard
	Bolting tooth		Not available	Not available	Not available	Standard	Standard	Standard

※ Specifications above are subject to change without notice for quality improvement.

PULVERIZER - Rotatable type



Wide jaw opening
for a large demolition work surface



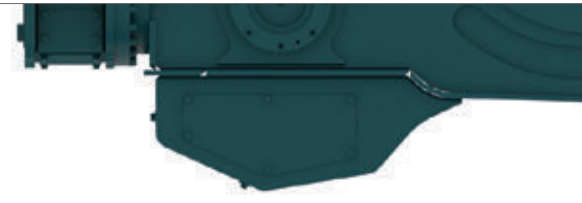
Hardened teeth
made of special materials for enhanced durability



Fully reversible rectangular blades



Hydraulic 360 rotation unit
allowing fast and targeted positioning to materials



Integrated speed-up valve
with cylinder delivering easy maintenance and roomy space



Integrated speed-up valve with cylinder
Maximum maintenance efficiency

Hydraulic 360 rotation unit
Limitless rotation for fast and positioning in all conditions

Trunnion type cylinder
Improved pulverizer with trunnion supported cylinder gives you high breaking forces through-out the entire working cycle as well as stable movement

Wider jaw
With its wider jaw, exceptional closing force and short cycle times, Pulverizer series provide excellent productivity in concrete reduction and reinforced steel separation.

Durability
Increased durability has been achieved with the use of abrasive-resistant materials. Advanced design and construction produces a powerful and durable attachment to handle the toughest jobs.

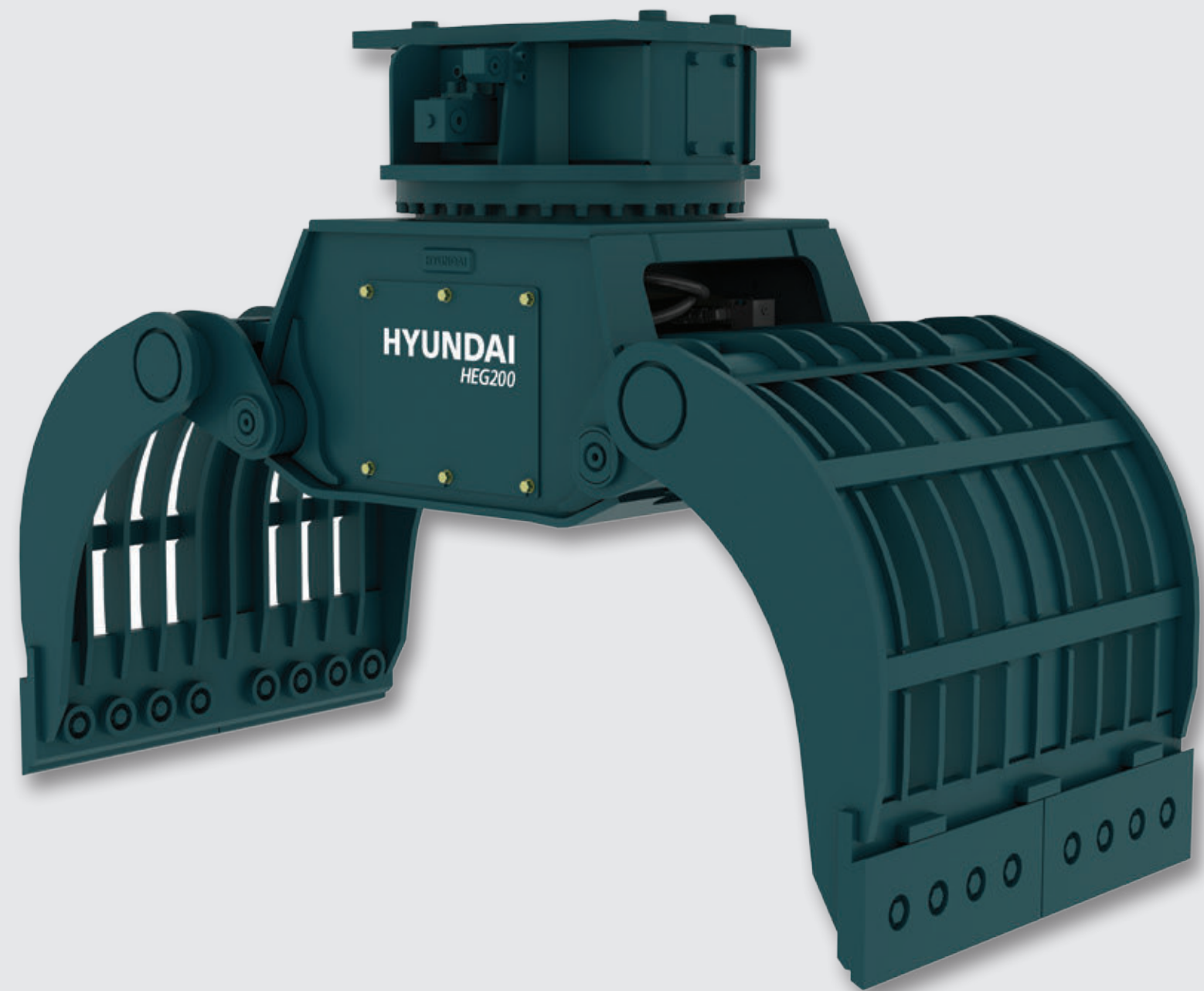
• SPECIFICATION

Specification		Unit	HEP160R	HEP200R	HEP250R	HEP350R	HEP450R
Working weight		kg	1,250	1,817	2,517	2,934	4,219
Overall length		mm	1,840	2,134	2,474	2,586	3,075
Jaw width(Fixed/Moving Jaw)		mm	384 / 298	438 / 350	470 / 372	510 / 392	550 / 398
Max. Jaw opening		mm	720	765	925	974	1,142
Max. Operating pressure		bar	350	350	350	350	350
Crushing force(tip)		ton	56	61	73	83	114
Cutter blade length		mm	240	240	360	360	240
Required oil flow		lpm	100 ~ 180	150 ~ 250	150 ~ 250	200 ~ 300	200 ~ 300
Applicable Carrier Range		ton	13 ~ 16	17 ~ 25	20 ~ 27	28 ~ 36	40 ~ 50
Standard features	Speed-up valve		Not available	Standard	Standard	Standard	Standard
	Bolting tooth		Not available	Not available	Standard	Standard	Standard

※ Specifications above are subject to change without notice for quality improvement.

GRAB

Grab series are designed for selective demolition,
sorting of recycle material and loading of various materials.



GRAB

Reinforced body & jaw

Body and jaw are reinforced to prevent from deformation against external force.
(from HEG140 and larger)
Mainframe is tightly protected from crushing debris.
Thus inner parts remain intact in any condition.

Stopper

Reinforced stopper is located on body and it has the structure much stronger to be fixed. (from HEG140 and larger)

Using quality material

HARDOX plates are adapted on the jaw and bottom plate of body where the wear resistance and durability are required.

Easy maintenance and repairing

New Grab series provide easy maintenance and repairing.

Hydraulic 360° Rotation unit

The continuous 360° hydraulic rotation got stronger with two rotation motors.
(from HEG140 and larger)
This can make sorting job much easier with strong torque.

2 cylinders are applied

2 cylinders are applied for equal distributed load & better productivity of jaws.
(from HEG140 and larger)

Improved Cutting edge plate

Separable cutting edge plate for easy replacement.
Hardened bolts and stopper block are applied.



• SPECIFICATION

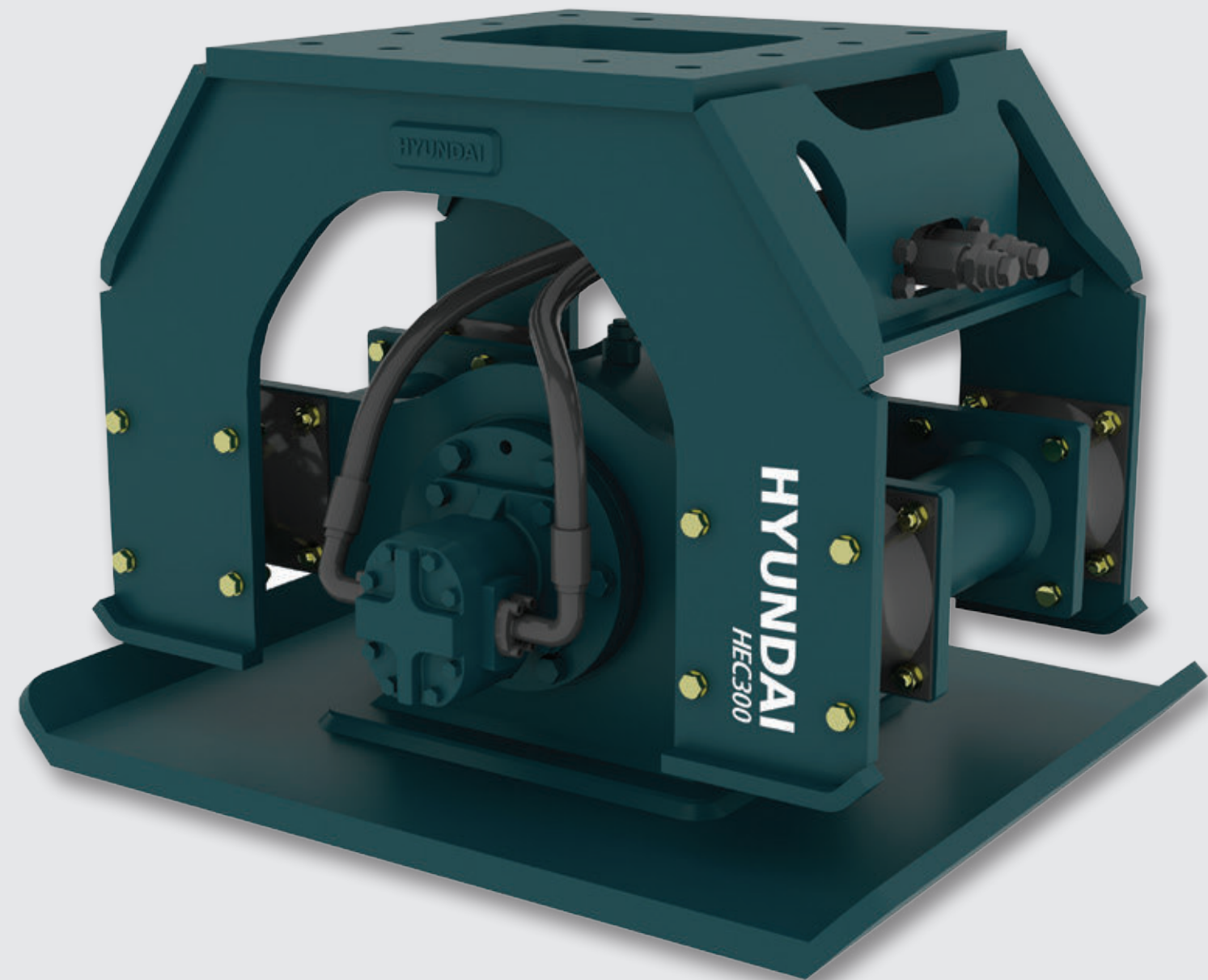
Specification		Unit	HEG030	HEG050	HEG080	HEG140	HEG200	HEG300
Number of Cylinder		ea	1	1	1	2	2	2
Working weight		kg	265	432	568	1,086	1,494	2,370
Max. Closing force		ton	1.7	2.5	3.2	6.1	7.3	8.6
Oil flow		lpm	10~30	20~60	20~60	40~80	60~120	80~160
Operating Pressure		bar	270	300	300	350	350	350
Capacity		liter	100	230	320	430	620	995
Length	Closing Position	mm	802	1,042	1,186	1,202	1,393	1,531
	Opening Position	mm	1,182	1,533	1,736	1,748	2,050	2,285
Heigth	Closing Position	mm	949	1,162	1,303	1,325	1,459	1,599
	Opening Position	mm	1,018	1,292	1,447	1,417	1,573	1,742
Width		mm	450	600	700	900	1,000	1,250
Applicable Carrier Range		ton	3 ~ 4	4 ~ 8	7 ~ 10	11 ~ 16	18 ~ 25	25 ~ 38

※ Specifications above are subject to change without notice for quality improvement.



COMPACTOR

Compactor series are designed for soil compaction, utility, construction and road maintenance applications.



COMPACTOR



Oil bath type

Compaction weight chamber is filled with gear oil, thus, it eliminates periodical greasing & oil changing interval is now changed to 1 year.



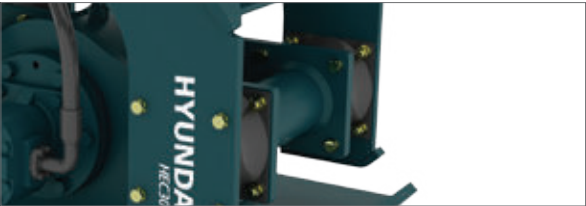
Durable frame design

Durability of main body is increased by flat and solid frame.



Stopper

It limits excessive pressing force from excavator.



Wider cushion rubber for HEC050N

It increases the durability of cushion rubber



• SPECIFICATION

Specification		Unit	HEC050N	HEC100	HEC150	HEC200	HEC300
Impluse force		ton	2.1	4.0	6.4	11.2	17.3
Weight	Adapter mount type	kg	260	430	689	1,094	1,502
	Direct mount type	kg	264				
Height(H)	Adapter mount type	mm	650	640	750	840	943
	Direct mount type	mm	695				
Width(W)		mm	320	610	740	860	1,000
Base plate (W x L)		mm	320 x 745	610 x 900	740 x 1,050	860 x 1,200	1,000 x 1,300
Compaction area		m	0.24	0.55	0.78	1.03	1.30
Oil flow required		lpm	45 ~ 65	50 ~ 120	80 ~ 170	110 ~ 200	160 ~ 250
Max. Cycle per minute		rpm	2,100	2,000	2,000	2,000	2,000
Operating pressure	Free load	bar	30 ~ 50	30 ~ 50	30 ~ 50	30 ~ 50	30 ~ 50
	With load	bar	100 ~ 220	100 ~ 138	100 ~ 138	100 ~ 138	100 ~ 138
Applicable Carrier Range		ton	4 ~ 6	6 ~ 10	11 ~ 16	17 ~ 25	26 ~ 40

※ Specifications above are subject to change without notice for quality improvement.

Easy and versatile mounting

Direct Mount frame : the pin-on type frame is designed to accept a variety of slip-fit bushings and pins, resulting in versatile installation on any carrier that does not require OEM’s pin-to-pin distance.

Single hose block

All hoses are routed within the frame and connected to a mono hose block located on the back. It keeps the hoses from easy damage.

Cushion rubber

Specially designed cushion rubbers protect machine and operator from vibrations.

Heavy duty gear motor

Heavy duty and high efficiency gear motor with splined shaft and high pressure motor seals prevent easy damage caused by pressure shock during startup and shutdown.

Self-aligning bearing

Self-aligning double row spherical roller bearing provides a long service life to rotating components.

Easy maintenance

All grease fittings are located for easy access.

Cross-check valve as standard

Built-in cross check valve within motor protects the motor and bearing from damage caused by abrupt shutdown of hydraulic flow. And it also eliminates the need for a case drain.

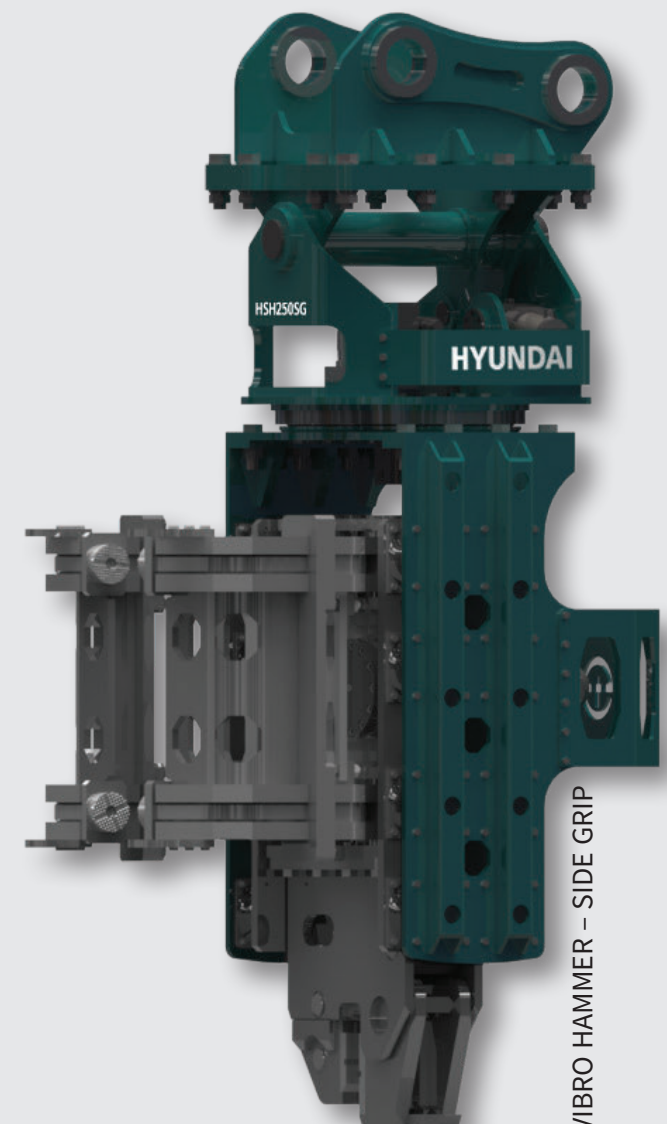
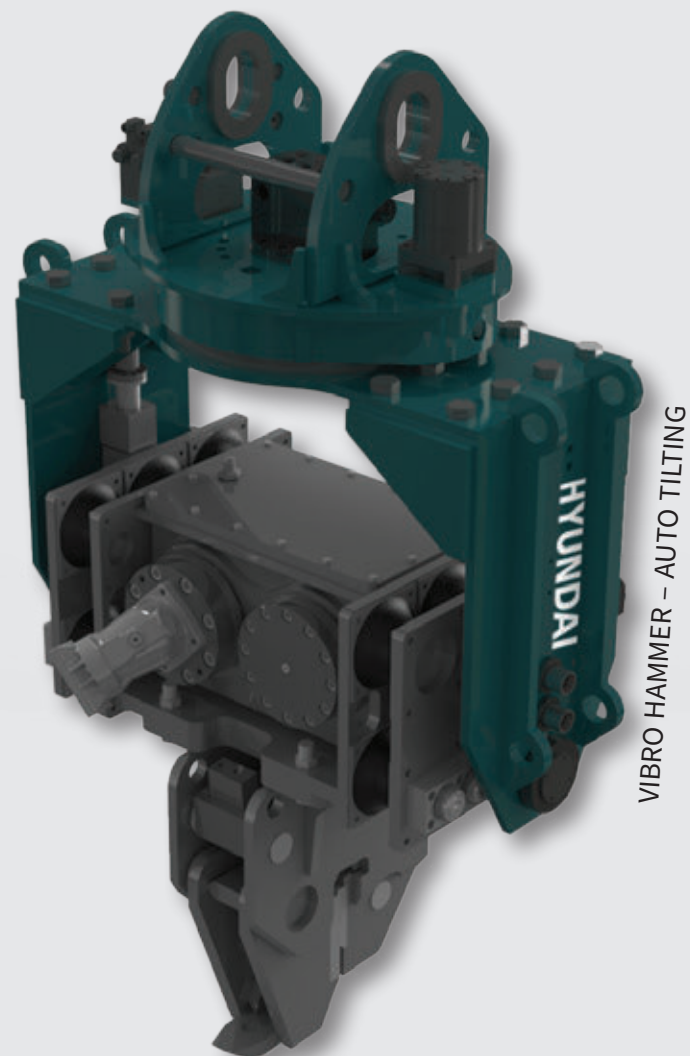
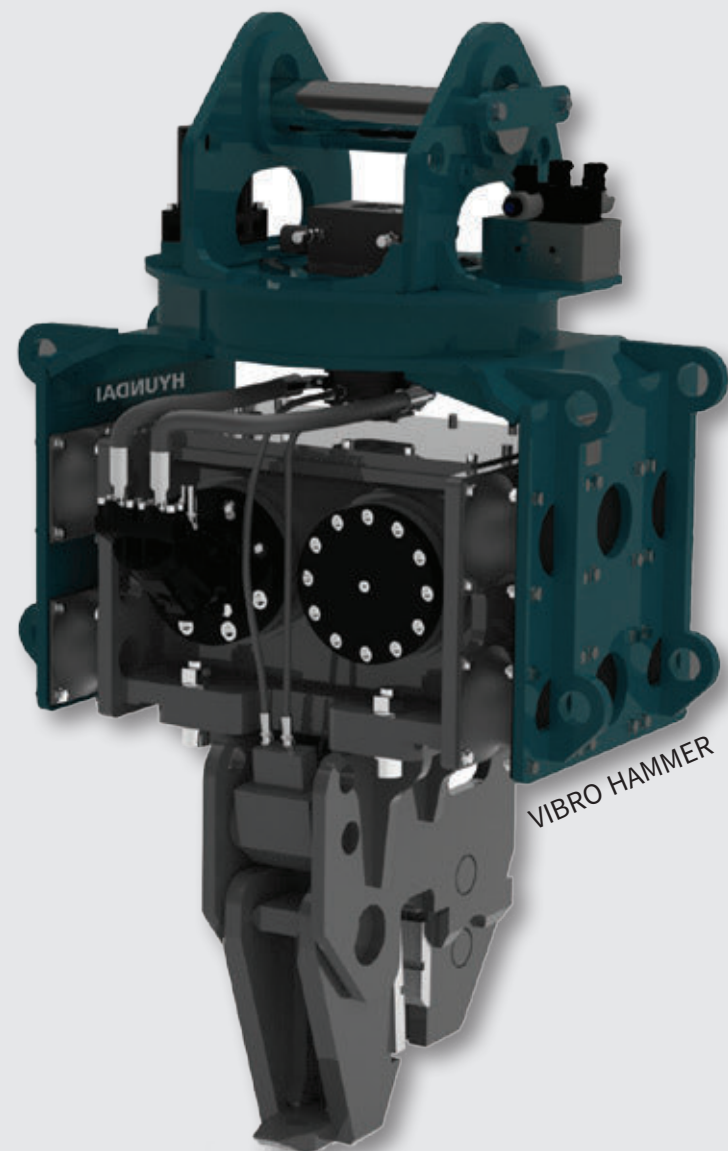
Valve pack as standard

Flow control valve (Priority flow divider) regulates hydraulic in – flow to the motor and prevents it from over-speeding. Thus, the compactor can be installed on carrier not equipped with a flow control valve on its auxiliary plumbing.

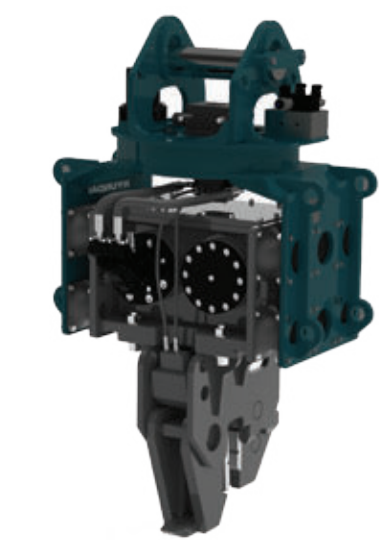
Pressure relief valve is also incorporated in the valve pack and it prevents system from over-pressure. An attachment, such as breaker, which works at a relatively higher pressure than compactor can be easily switched to the compactor on the same auxiliary plumbing without re-setting of the carrier’s relief valve pressure.

By-pass check valve, flow control valve, and pressure relief valve are packed within a single hose block.

VIBRO HAMMER



VIBRO HAMMER



SEA SIDE



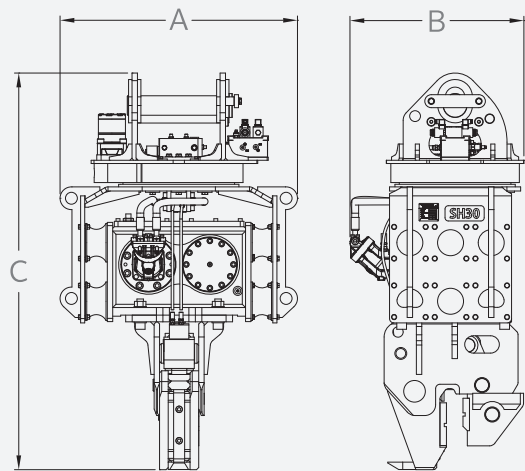
RIVER SIDE



SAND FIELD



WITH AUGER



• SPECIFICATION

Specification	Unit	HSH250	HSH300	HSH400
Weight (Incl. Mounting Cap)	kg	1,520	1,810	2,050
Extension boom weight	kg	500	600	715
Setting Pressure	bar	250	250	280
Oil flow	lpm	170 ~ 200	180 ~ 220	240 ~ 260
Centrifugal Force	kN	400	520	550
Frequency	rpm	2,800 ~ 3,600	2,600 ~ 3,600	2,200 ~ 2,800
Rotation	degrees	360	360	360
Jaw open	mm	65	65	65
Dimension (A x B x C)	mm	1,094 x 711 x 1,862	1,094 x 805 x 1,862	1,200 x 900 x 1,950
Max. Working height	m	8.5	10.5	11.5
Applicable Carrier Range	ton	20 ~ 30	30 ~ 40	40 ~ 55

※ Specifications above are subject to change without notice for quality improvement.

Faster and more powerful

- Faster penetration and pulling up than other vibratory hammers thanks to bigger and centered eccentric weight.

Rotational mounting

- 360 hydraulic rotation system

Rigid and durability

- Double bearing structure and rigid rubber cushion

Low maintenance cost & Easy maintenance

- Concise structure of components

Easy installation & operation

- Concise operation electric kits



VIBRO HAMMER

VIBRO HAMMER – AUTO TILTING



SEA SIDE



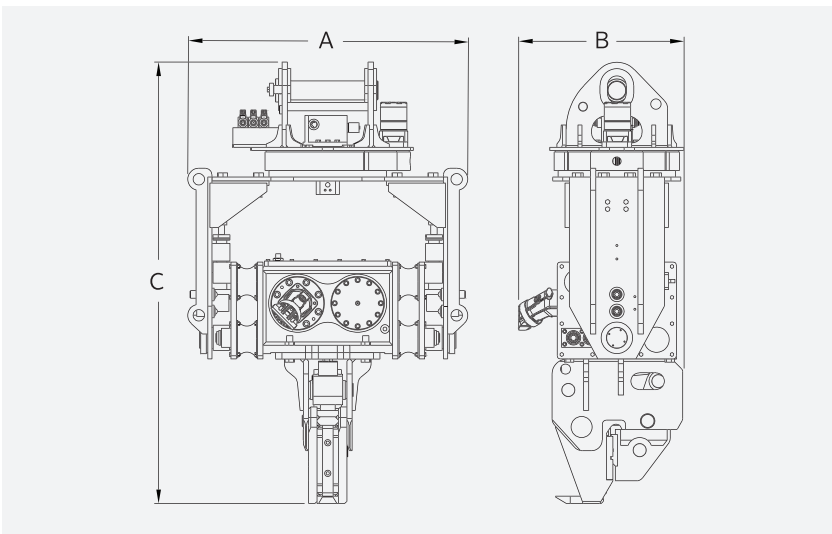
RIVER SIDE



SAND FIELD



WITH AUGER



• SPECIFICATION

Specification	Unit	HSH250T	HSH300T	HSH400T
Weight (Incl. Mounting Cap)	kg	1,620	1,910	2,250
Extension boom weight	kg	500	600	715
Setting Pressure	bar	250	250	280
Oil flow	lpm	170 ~ 200	180 ~ 220	240 ~ 260
Centrifugal Force	kN	400	520	550
Frequency	rpm	2,800 ~ 3,600	2,600 ~ 3,600	2,200 ~ 2,800
Rotation	degrees	360	360	360
Tilt angle	degrees	90	90	90
Jaw open	mm	65	65	65
Dimension (A x B x C)	mm	1,326 x 711 x 2,089	1,326 x 805 x 2,089	1,435 x 900 x 2,180
Max. Working height	m	8.5	10.5	11.5
Applicable Carrier Range	ton	20 ~ 30	30 ~ 40	40 ~ 55

※ Specifications above are subject to change without notice for quality improvement.

More efficient and safer works

- 90-degree tilt / 360° hydraulic rotation function enable more efficient and safer works

“Auto Hold” function on 90-degree tilting position

Rigid and durability

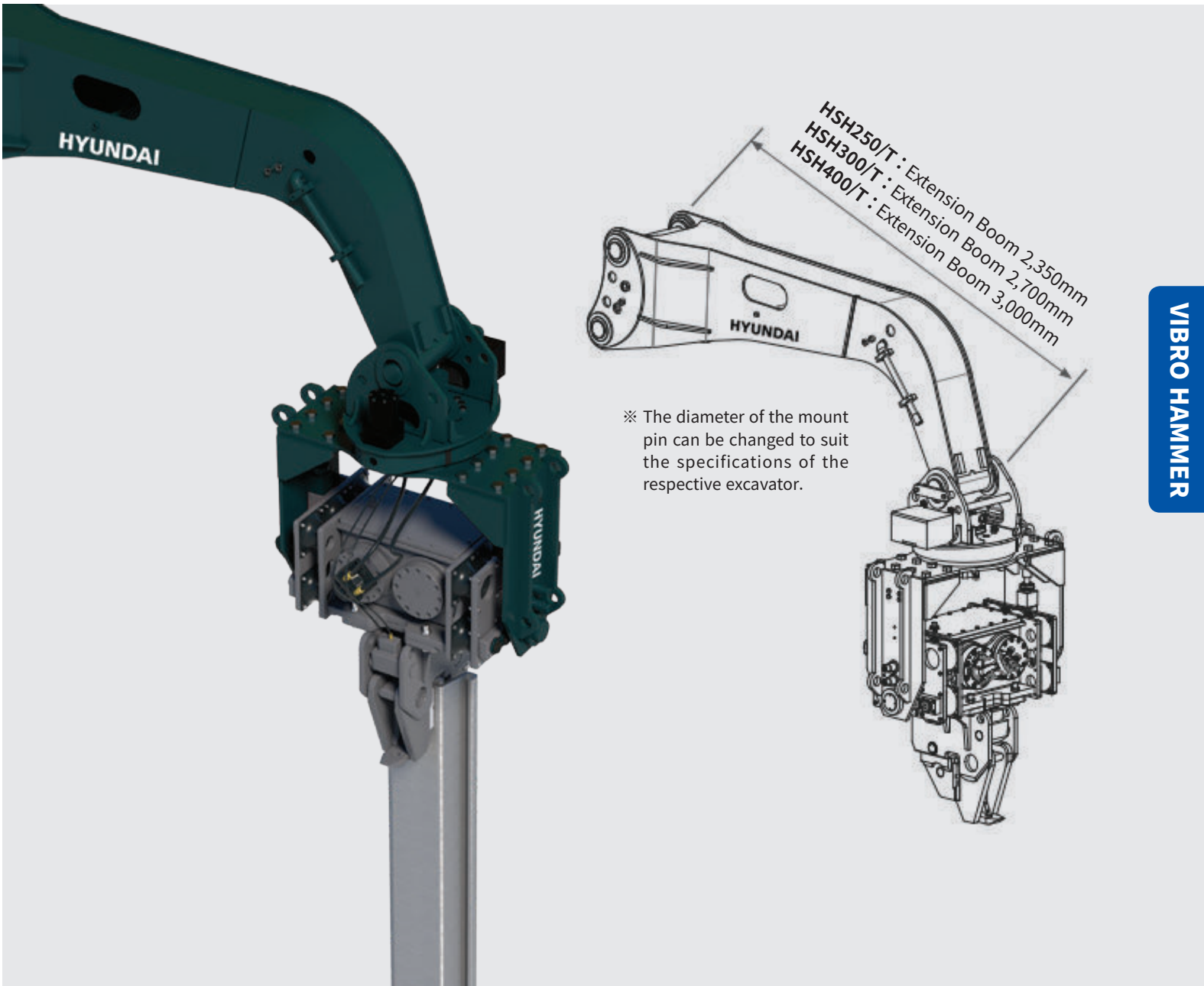
- Double bearing structure and rigid rubber cushion

Low maintenance cost & easy maintenance

- Concise structure of components

Easy installation & operation

- Concise operation electric kits
- Compact design without tilting cylinders, which is prone to break down and high maintenance costs



VIBRO HAMMER

VIBRO HAMMER – SIDE GRIP



SEA SIDE



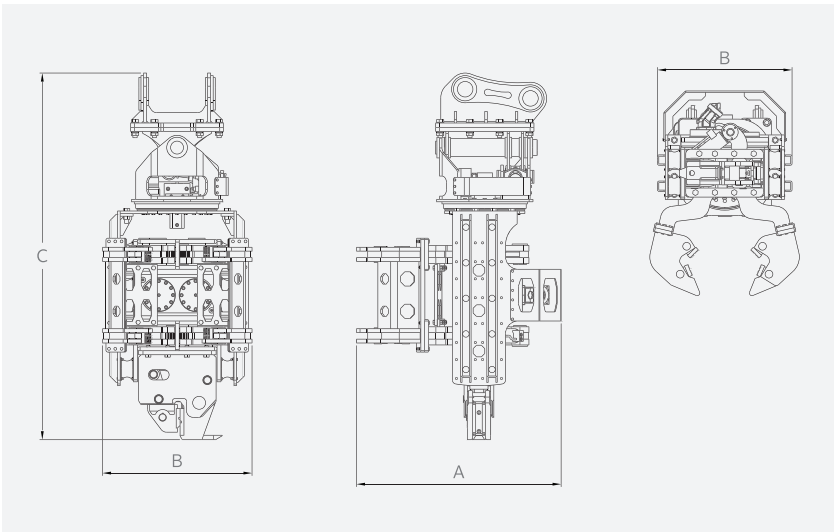
RIVER SIDE



HEAD ROOM CONSTRUCTION



CONFINED SPACE JOB SITE



• SPECIFICATION

Specification	Unit	HSH250SG	HSH300SG
Weight (Incl. Mounting Cap)	kg	2,820	3,300
Setting Pressure	bar	250	250
Oil flow	lpm	170 ~ 200	180 ~ 220
Centrifugal Force	kN	400	520
Frequency	rpm	2,800 ~ 3,600	2,800 ~ 3,600
Rotation	degrees	360	360
Tilt angle	degrees	±30	±30
Jaw open	mm	65	65
Dimension (A x B x C)	mm	1,515 x 1,040 x 2,833	1,515 x 1,040 x 2,833
Applicable Carrier Range	ton	20 ~ 30	30 ~ 45

※ Specifications above are subject to change without notice for quality improvement.

Available for a wide ranges of piles

- Sheet piles, H beams, I-H beams, and round-piles

Versatile piling at headroom job site

Versatile piling at a confined space job site

Precise and accurate side clamping

- 360-degree Swivel rotatable jaws enable precisely and accurately clamping

Quicker and more powerful piling

- Faster penetration and extraction than other side grip pile drivers thanks to bigger and double eccentric weight

Low maintenance cost & easy maintenance

- Concise structure of components

Rigid and durability

- Double bearings, balanced counter weights and rigid rubber cushion



SIDE GRIP SELECTION GUIDE

Model		30~45 ton	28~30 ton	20~26 ton	17~20 ton
Pile size (length/weight)	6m/2800kg	HSH300SG			
	12m/1900kg				
	16m/1300kg				
	8m/2300kg		HSH300SG HSH250SG	HSH250SG	
	12m/1800kg				
	16m/1200kg				
	6m/1200kg				HSH250SG
	8m/1000kg				
	10m/900kg				
Suitable piles	Sheet piles	Width 400 ~1,200mm / depth 265mm			
	H-beams/Round-piles	Max 500X300 / Max dia 500mm			

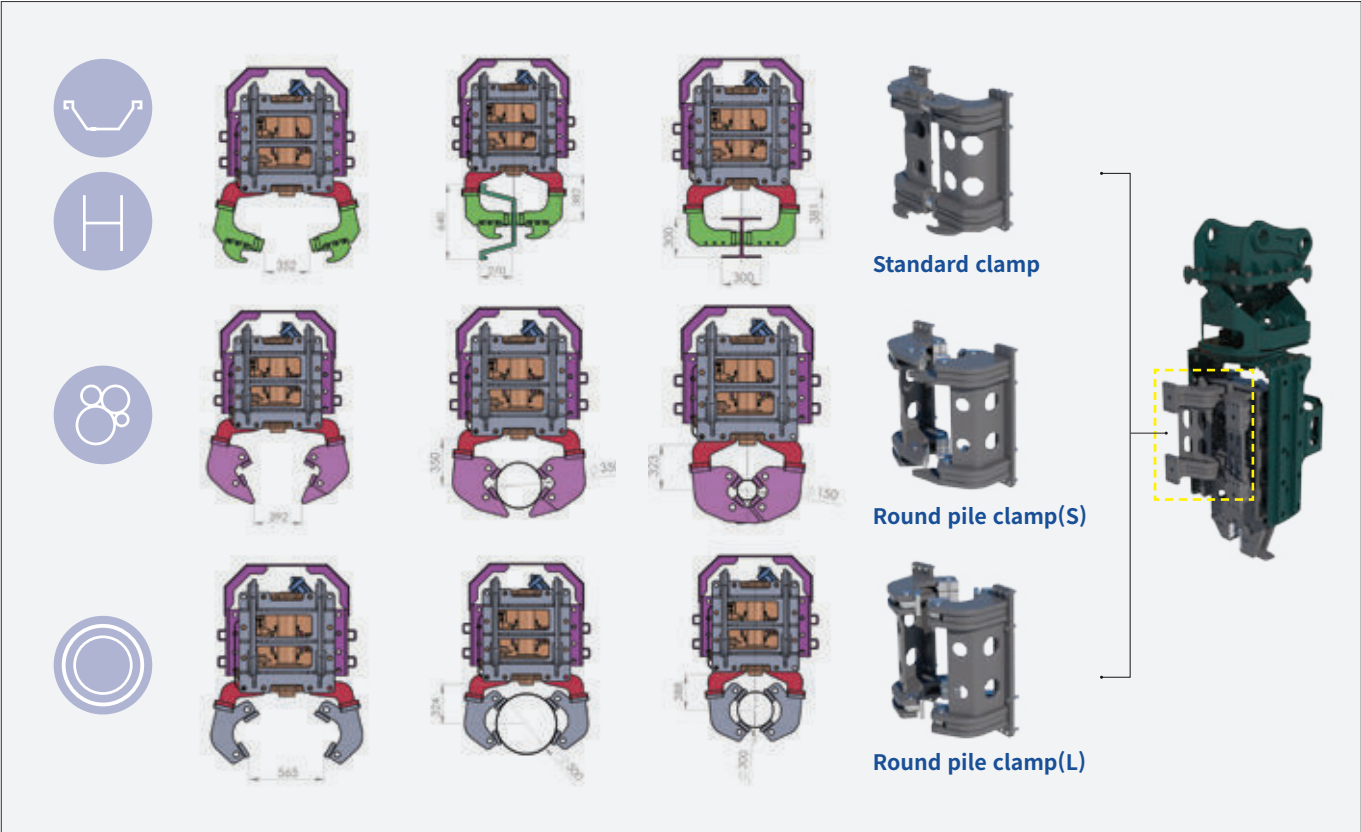
※ When making the final selection, excavator engine size and hydraulic system design (oil pump arrangement, oil flow rate/pressure, etc.), excavator lifting capacity and stability as well as soil and site conditions shall be taken into account

Model		Unit	HSH250SG	HSH300SG
Suitable pile grip dia	Round pile clamp(S)	mm	150 ~ 350	
	Round pile clamp(L)	mm	300 ~ 500	

※ Specifications above are subject to change without notice for quality improvement.

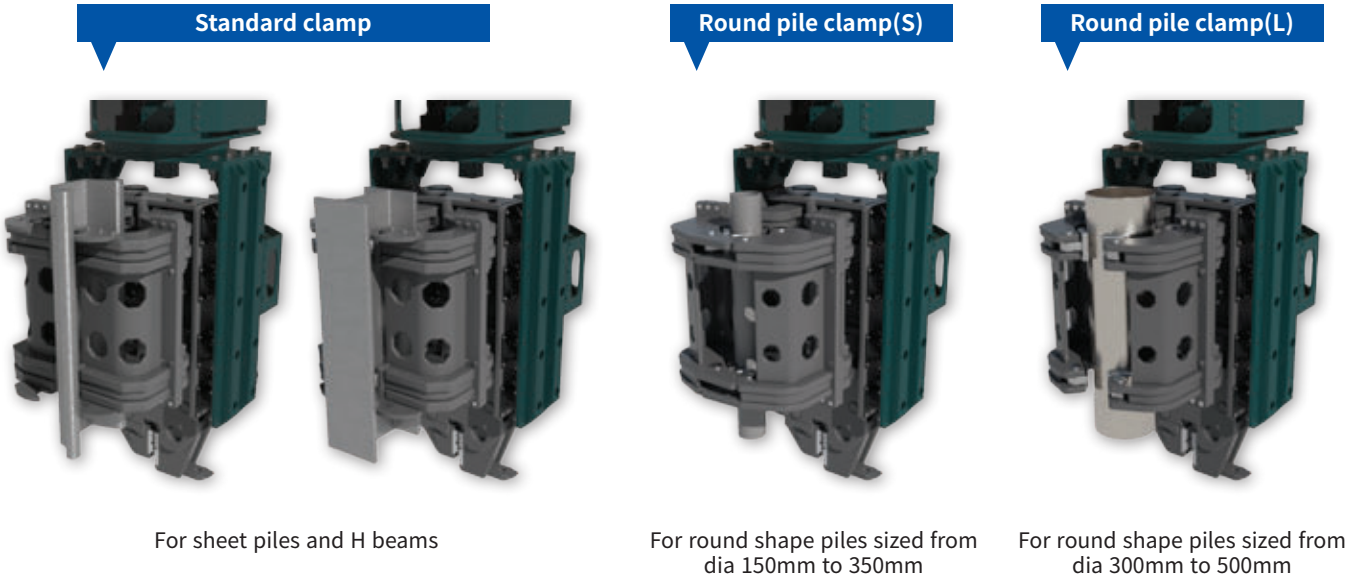
SIDE GRIP CLAMP SELECTION GUIDE

• CLAMP OPTION SPECIFICATION



• INTERCHANGEABLE CLAMP OPTION

Thanks to its interchangeable side clamp system, the Vibro Hammer – Side Grip can handle all types of piles with its multiple clamps, and it offers quick transfer capability between various applications
Round pile clamp(S) and Round pile clamp(L) are an option



VIBRO RIPPER



VIBRO RIPPER



MINING



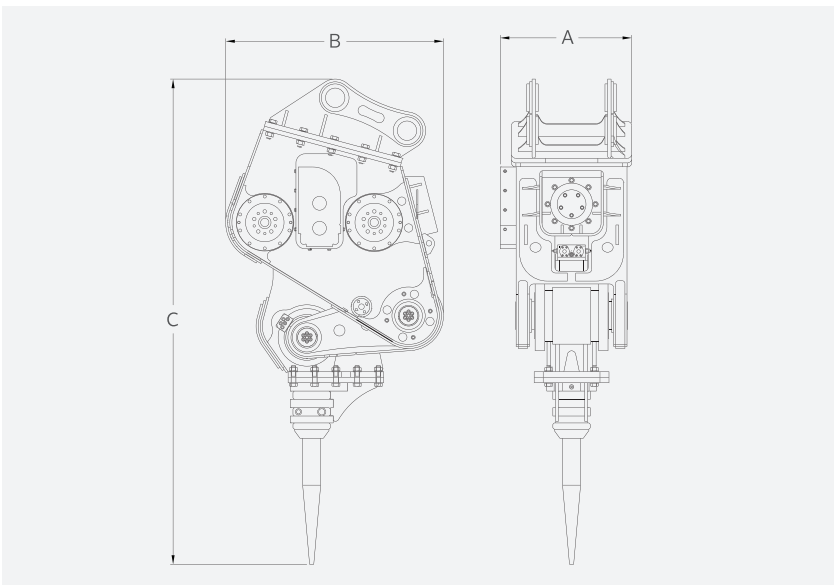
DOWNTOWN CONSTRUCTION



TUNNEL CONSTRUCTION



UNDER WATER OPERATION



Higher productivity than hydraulic breaker

- 2-8 times better productivity than hyd. breaker depending on type of rocks

More powerful than other vibratory rippers

- Unique structure and design specially bigger and centered eccentric weight enable - most powerful Ripper in the same class

Selective tool options - Three tools for one Ripper

- Chisel type for hard rock, Tip(Tooth) type for Soft & mid hard rock and Compactor type for compacting ground
- Three optional tools enable to offer wider selections of application at rock breaking job sites

Minimum vibration to excavator and operator at hard-rock

- Unique Cartilage-link allows more powerful striking force but less vibration transmitted to excavator and operator
- Less impact to excavator and less fatigue to operator

Minimum noise

- Unique Cartilage-link structure minimizes the noise (max. 90dB in 10m) and it allows the construction in noise-regulated area

Easy on-site maintenance & low maintenance cost

- Concise structure of components and double bearing structure
- Most parts can be replaced at job site
- No need to return it to repair shop
- Less number of parts enable low maintenance cost
- Maximum productivity can be achieved by reducing down time by on site parts replacement and fast tip(tooth) replacement

Under water operation without special devices

- All kinds of work under water can be done without any expensive and complicated preparations

• SPECIFICATION

Specification	Unit	HSR250	HSR300	HSR400	HSR500	HSR800
Weight (Incl. Mounting Cap)	kg	2,620	3,450	4,440	5,600	10,500
Setting pressure	bar	250	250	280	280	300
Operating Pressure	bar	180 ~ 220	180 ~ 220	210 ~ 250	210 ~ 250	240 ~ 270
Oil Flow	lpm	170 ~ 200	180 ~ 220	240 ~ 280	250 ~ 310	500 ~ 560
Frequency	bpm	2,500 ~ 3,500	2,500 ~ 3,200	2,000 ~ 2,800	2,000 ~ 2,800	2,200 ~ 2,500
Dimension (A x B x C)	mm	787 x 1,148 x 2,870	863 x 1,321 x 3,231	915 x 1,401 x 3,385	1,060 x 1,554 x 3,665	1,404 x 1,600 x 4,100
Tool Diameter	mm	110	120	130	140	180
Applicable Carrier Range	ton	20 ~ 25	28 ~ 34	36 ~ 43	46 ~ 60	70 ~ 90

※ Specifications above are subject to change without notice for quality improvement.

Tip(tooth) type



Chisel type



Compactor type(Option for model HSR250/300)





Address First Tower Building, 55 Bundang-ro, Bundang-gu, Seongnam-si, Gyeonggi-do

www.hyundai-ce.com